



# the Word

Bassendean Memorial Public Library

Newsletter

Issue 103

October 2020

## What's on at your Library

### Our Library celebrates 15 years in the new building

Bassendean Memorial Library was built in 1972 on the original site of the war memorial. The library's name acknowledges the community's co-operation in allowing the memorial to be moved. In 2003 the community again selected 46 Old Perth Road as a preferred location for the new facility. The old library was demolished in December 2004 and construction of the new building commenced early in 2005. The library moved to the current premises on October 2005.



Our library  
1972-2004



Library in ruins Dec  
2004



Our new library  
Dec 2005



### Organic Gardening for Beginners.

A Bassendean Memorial Library  
Lunchtime Interlude



**Tuesday 13 October, 2020**  
**1.00pm - 2.30pm**

Bassendean Memorial Library  
Please book via the booking link below.  
[www.trybooking.com/BLMUY](http://www.trybooking.com/BLMUY)



**Monday 5 October – 31 October 2020**  
(Library opening hours)

Our shelves are overflowing with lots of lovely donations. This year, due to Covid-19, we cannot have our traditional big book sale but we will continually bring out new sale items each week!

**Prices range from 20c - \$5.00**

Come in for bargains galore!

**1 October** – School holidays  
Lego. 1.00pm - 2.15pm

**3 October** - Justice of the Peace  
at the Library; 9.15am-11:00am

**5 - 31 October** - Booktober book  
sale

**5 October** - Science Mum. A  
school holiday activity. 1.00pm -  
2.00pm

**7 & 21 October** - NDIS  
community Information  
representative. 9.30am - 3.30pm

**8 October** - Decomposition  
Detectives. A school holiday  
activity. 1.00pm - 2.30pm

**13 October** - Lunchtime  
Interlude: Organic gardening for  
beginners. 1.00pm - 2.30pm

**22 October** - Crazy rock faces.  
A Children's Book Week event.  
4.00pm - 5.00pm

**Craft group**; every Monday.  
9.00am - 12.00 noon.  
Meeting room 1

**ESL classes**; every Monday -  
Beginners 5.00pm  
Intermediate 5.30pm

**Rhymetime**; every Tuesday &  
Wednesday - 11.00am

**Storytime**; every Thursday -  
10.30am

EFTPOS  
is now  
available  
at the  
Library



Events can also be booked by  
ringing 9279 2966 or coming into  
the Library

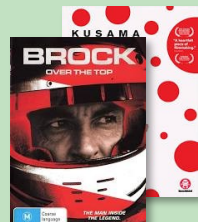
## New DVDs

### Movies

Little Fockers  
Dogman  
Liar  
Capone  
Little monsters

### Non Fiction

Kusama : infinity : the life and art of Yayoi Kusama  
Brock : over the top



### TV Series

Watchmen : an HBO limited series  
Mr. Mercedes : season 2  
Brooklyn nine-nine : season 7  
Yellowstone : seasons 1 & 2  
His dark materials : season 1  
The last kingdom : season 4



### DVD Review

#### Anne with an 'E' (season 1)

This reimagining of the classic book and film is a coming-of-age story about a young orphan who is seeking love, acceptance and her place in the world. Amybeth McNulty stars as Anne, a 13-year-old who has endured an abusive childhood in orphanages and the homes of strangers. In the late 1890s, Anne is mistakenly sent to live with aging siblings, Marilla and Matthew Cuthbert, who live on Prince Edward Island. Anne, who proves to be uniquely spirited, imaginative and smart, transforms the lives of Marilla, Matthew and everyone else in their small town. Having been a fan of the 80's version of this series, I watched this series with high hopes. While keeping to the original story, this series creates a whole new perspective. I found it charming and very watchable. They introduce some new lovely characters which add nicely to the story.

I would like to note that they do add in details that are more aimed at today's world view that would not have been an issue when the novels were written.



## New Books

Check the Library website for New Titles in Stock, updated weekly.

### Fiction

Charlotte Pass / Lee Christine  
The only child / Mi-Ae Seo  
Happy ever after / C.C. MacDonald  
I will miss you tomorrow / Heine Bakkeid  
Death in the Ladies' Goddess Club / Julian Leatherdale  
Stop at nothing / Michael Ledwidge  
Gathering dark / Candice Fox  
Silence / Susan Allott  
The lost lights of St Kilda / Elisabeth Gifford  
Maybe in another life / Taylor Jenkins Reid  
Forever, interrupted / Taylor Jenkins Reid  
A strange country / Muriel Barbery  
Agency / William Gibson  
Fauna / Donna Mazza  
Paris savages / Katherine Johnson  
Exploded view / Carrie Tiffany  
Mammoth / Chris Flynn  
A lonely girl is a dangerous thing / Jessie Tu  
Man in armour / Siobhan McKenna  
The Labyrinth / Amanda Lohrey

### Non fiction

The environment / Jonathan Litton  
Knitting fresh brioche / Nancy Marchant  
Stalin's wine cellar / John Baker



#### The Goldminer's Sister by Alison Stuart (2020).

In 1873 Eliza arrives in the goldmining town of Maiden's Creek in search of her brother but instead she finds a tragic mystery and hints of betrayals by those closest to her.

Mining engineer Alec left Scotland to escape the memory of his dead wife and child and despite the best efforts of eligible ladies, he is determined never to give his heart again.

After reading this author's previous novel (The Postmistress) and really enjoying it, I was definitely keen to read this book (and kept seeing amazing reviews for it). Thankfully it more than lived up to the hype! Readers who have read The Postmistress will note some familiar characters and I found that to be a lovely touch; however you don't need to have read that book to read and enjoy this one. I find this author's style really engaging; both books I've read I've been really drawn into the story which is a mixture of history, drama and light romance, and felt so invested in the main character's lives.

BG





# Local Studies Collection

## Railfest 2020!

Sunday 11 October, 10am-4pm

The Railway Museum (136 Railway Parade, Bassendean WA)

Adults \$9, Concessions \$7, Children \$4 (under 4 years old free with adult)

Every October, the Rail Transport Museum hosts the annual Railfest which is a celebration of the State's rail heritage and conducted by the Rail Heritage Society of WA.

The Rail Transport Museum at Bassendean is operated by Rail Heritage WA and further information is available on their website:

<http://www.railheritagewa.org.au/>

Gates open at 10am.

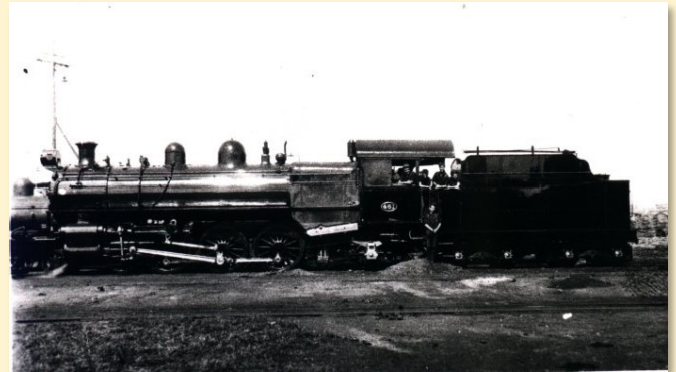
Book via this link:

[www.trybooking.com/BLLOS](http://www.trybooking.com/BLLOS) .

Sessions to enter are every hour.

The Rail Transport Museum is a must-see for railway and history buffs:

- It offers tourists and visitors a superb collection of locomotives and railway historical memorabilia that charts the opening up of the western third of the continent.
- The collection is highly significant as it is the only one in Western Australia that aims to tell the story of all railways across the state. Other collections focus on one aspect or region.



Locomotive At The Western Australian Government Railway Workshops In Midland, C.1935

## Seniors

Bassendean Wider Vision.

The Bassendean Wider Vision group members meet in the Main Hall, under the Town of Bassendean Council Chambers, every Wednesday morning at 10.00am. The goal is to inform, entertain and provide social opportunities for the community. On the first 3 Wednesdays of the month, there is a guest speaker, followed by morning tea. The last Wednesday of the month is a social day. 3 times a year a bus is hired to take participants out to lunch in venues a little out of town - always a great day out and a lot of fun.



The cost is \$3 for every session you attend and a \$10 annual membership fee. Contact Doreen Waddell on 9296 8994 for further Information.

## eServices



### **Print from anywhere, pick up at the library.**

With our MobilePrint Service, you can use your personal computer or mobile device to print to the library's printers from anywhere.

Standard print charges apply and you will be able to see the cost of your print job before you come to the Library.

EFTPOS is now available.

### **New to the digital world?**

Did you just get a new phone or Tablet?

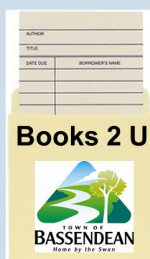
### **Looking for an update to your technology skills?**

Do you feel like your computer/tablet/laptop/phone skills need some updating?

Our trainers are available to help you with personalised one hour sessions.



Call today to make a free appointment!  
**9279 2966**



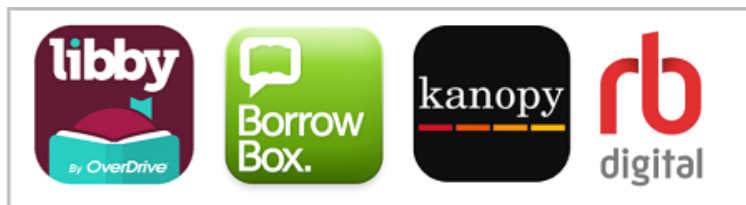
## **Books 2 U**

We deliver Books 2 U. Our Housebound Book Delivery Service is happy to deliver to patrons who are unable to come to the Library. Monthly deliveries - last Thursday and Friday of the month.



Get access to our digital library collection from where ever you are. We have brochures, with step by step instructions available from our website to help you set up your eService accounts.

[library.bassendean.wa.gov.au/information-resources/eresources/e.aspx](http://library.bassendean.wa.gov.au/information-resources/eresources/e.aspx)



## Where can I find Support?

Town of Bassendean  
Seniors & Disability Services  
9279 6588

Beyond Blue  
1300 224 636

Kids Helpline  
1800 551 800

Lifeline  
13 11 14

Department of Health  
Healthy WA  
1800 551 800



### Free English classes in the Library

Bassendean Memorial Library invites adults whose first language is not English to join our free English classes.

Monday evenings from 3 August, 2020.

**5.00 pm - 5.30 pm for beginners**  
**5.30 pm - 6.30 pm for Intermediate**

Register your interest at the Library information desk or call us on 9279 2966.



Our Justice of the Peace  
service is on  
the first Saturday of the  
month.  
9.15am - 11.00am

Bassendean Memorial Library invites you to help build our collection by telling us what you want to read, watch and listen to. You can suggest authors, titles and/or subjects.

**I recommend**

Book \_\_\_\_\_ **Book Request**

Audio \_\_\_\_\_

DVD \_\_\_\_\_

Name (optional) \_\_\_\_\_

### Your Suggestions Please!

We're inviting you to help build our collection by telling us what you want to watch & read.

Look for the forms at our information desk, fill it in and post in our Library Post Box.

Remember to include your name so we can reserve it to you.



### Bassendean Memorial Public Library

46 Old Perth Road, Bassendean  
Western Australia 6054

Phone: (08)9279 2966

Email: [baslib@bassendean.wa.gov.au](mailto:baslib@bassendean.wa.gov.au)

[library.bassendean.wa.gov.au](http://library.bassendean.wa.gov.au)



### Opening Hours

**Monday 9am - 6pm**

**Tuesday 9am - 6pm**

**Wednesday 9am - 6pm**

**Thursday 9am - 6pm**

**Friday 9am - 5.30pm**

**Saturday 9am - 1pm**

Closed Sundays  
and Public Holidays

