



the Word

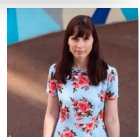
Bassendean Memorial Public Library
Newsletter

Issue 94
December 2019/
January 2020



Literary Salons in the Library welcomes Emily Paull in conversation with Gabriella Filippi.

In her timely debut, Emily Paull voices a chorus of characters that reveal and re-evaluate the expectations of women in Australia today - after all, well-behaved women rarely make history.



Wednesday 4 December
6.00pm for a 6.30pm start
Light refreshments provided
www.trybooking.com/BGFRT

In partnership
with Westbooks



The staff and volunteers at
the Bassendean Memorial
Library wish you and your
family a safe and happy
Christmas and New Year.



Bassendean Memorial Library
will be closed from
Monday 23 December 2019
to

Wednesday 1 January 2020

We will be open on Thursday 2 January from 9am.

Events can also be booked by ringing 9279 2966 or coming into
the Library

What's on at your Library

3 December - Historic Homes
guided walk.
No bookings required.
9.45am for a 10am start.

4 December - A very special visit
from a Christmas Fairy, Elf and
Santa.
Bookings required.
11am - 12pm.

4 December - Literary Salons in
the Library with Emily Paull.
Bookings required.
6.30pm - 8pm.

5 December - Kids Christmas
mish mash.
Bookings required.
3.45pm - 5pm.



20 December - The
Library will close at 12
noon and re-open at
9am on 21 December.

23 December - The Library will
be closed for the Christmas
period. The Library will re-open
on Thursday 2 January 2020.

2 January - The Library re-opens
at 9am.

6 January - Lego Workshop.
Bookings required.
10am - 12pm.

8 January - Anime bag making
with Nami Osaki. Jr.
Bookings required.
1pm - 2.15pm

15 January - Anime bag making
with Nami Osaki. Sr.
Bookings required.
1pm - 2.15pm

22 January - Board Games &
Lego day.
Bookings required.
1pm - 2pm

New DVDs

Movies

Vice
The good, the bad and the ugly
300
Spiderman: far from home
Zombieland
The keeper
The lady vanishes
Superman returns
Doom: annihilation
The sisters brothers
You were never really here
The public
Late night
The guilty
Fast & furious: Hobbs & Shaw
Summer of rockets
Custody



TV Series

A very English scandal
24: seasons 6 - 8
Fleabag: season 1
Keeping faith
Salvation: season 2
Good omens
Pagan Peak
Chicago fire: season 7
The Bay: season 1
Mrs Wilson



Junior

The secret life of pets
1 & 2
Descendants 2 & 3
The lion king



DVD Review

Pagan Peak (2019)

A frozen body is found on the boundary stone right on the Austro-German border, as if propped up for some pagan ritual. Shortly after the disparate investigation duo, police inspector Gedeon Winter from Austria and commissioner Ellie Stocker from Germany, have joined up on the case. The killer has sent audio messages to the press. The unsettling recording from the victim taken before her death, as well as intricate elements of the crime, make the investigators suspect this murder is merely the beginning of a greater scheme.

* German Language



New Books

Check the Library website for New Titles in Stock, updated weekly.

Fiction

Ask again, yes / Mary Beth Keane
The carer / Deborah Moggach
Maybe the horse will talk / Elliot Perlman
Heart of the cross / Emily Madden
Outback dreams / Rachael Johns
The blackhouse / Peter May
The turn of the key / Ruth Ware
Take out / Felicity Young
The secrets we kept / Lara Prescott
This poison will remain / Fred Vargas
Daisy Jones and the six / Taylor Jenkins Reid



Non fiction

The note through the wire / Doug Gold
WHAM! George and me / Andrew Ridgeley
The history of philosophy / A.C. Grayling
In pieces : a memoir / Sally Field
Your own kind of girl : a memoir / Claire Bowditch
The good cop : the true story of Ron Iddles / Justine Ford



The Shelly Bay Ladies Swimming Club by Sophie Green. (2019)

It's 1982 in Australia. Housewife Theresa takes up swimming at sunrise to get fit and have a few minutes to herself. Marie, a widower, swims from the same beach as it's her one constant in her new life without her husband. 25 year old Leanne suffered through a trauma and relies on herself only. She's a nurse to help others but she resists help for herself. Elaine has recently moved from England, leaving her adult sons behind. Her new closest friend is a gin bottle. These four women will find each other in the waters of Shelly Bay and build friendships to cherish. This book ended up being a lot deeper than what I expected. I thought it would be a light chick lit read and it was in one way but it also went much more emotional and hit the heart. At over 400 pages it's a fairly large book but it didn't feel that way, it felt like an easy quick read.

BG

Local Studies Collection



The Pensioner Guard Cottage will be closed to the public so that renovation works can be carried out. We will advise everyone when the Cottage will be accessible again.



Love local history?

Come along and test your local history knowledge with a quiz.

Who in your family knows the most about Ashfield, Eden Hill and Bassendean?

Count down to Christmas with a question a day or do them all at once... your choice.

Questions are about people, places and events- all true!

Lift the flap to reveal the answers!

Can you answer these questions?

What year was the Padbury building built opposite the Bassendean Railway Station?



What is the Aboriginal name for the Swan River?



Above and beyond

The Lost Photos, The Librarian and The Lady in Butler.

The story begins thus.....

Saint Vincent's, a charitable house of sound repute, had recently received an intriguing donation. Six family photos, perfectly preserved, displaying the sweet placement of a family, throughout the generations. A young girl in a crisp, white pinafore with a bow in her hair; a radiant bride, floating in a 1930's wedding dress. Time captured effortlessly in six, sharp shots.

Enter the librarian.....

Our industrious local history librarian, receiving a valuable tip off, quickly adjourns to Saint Vincent's, cheque book in hand, and craftily purchases these doorways into a bygone era.

Being familiar with the wonders of Ancestry.com, and rich in the company of good friends, our librarian utilises the services of a fellow researcher, and a family match is found. Interlocking pieces start to come together.

Far off in the land of Butler....

A lone lady, answering to the name of Mary*, stood sentinel to these lost photos. It had been her mother who had smiled so whimsically from a golden frame; and her family who had sat in stillness in a far off shop. Mary* was reunited with these photos due to the kind offices of our local Saint Vincent's manager, who graciously delivered these lost prints to an appreciative home.

A mystery had been solved, and Bassendean Memorial Library could begin again to unravel its next intriguing riddle....



*Name changed for confidentiality



Bassendean Memorial Library
will be closed from **12pm**
on **Friday 20 December**.
We will be open as usual on
Saturday 21 December
9 am - 1 pm




Rhymetime and Storytime

The last session dates for
Rhymetime and **Storytime**
are:

Rhymetime: 11 December
Storytime: 12 December
& 13 December, 2019.

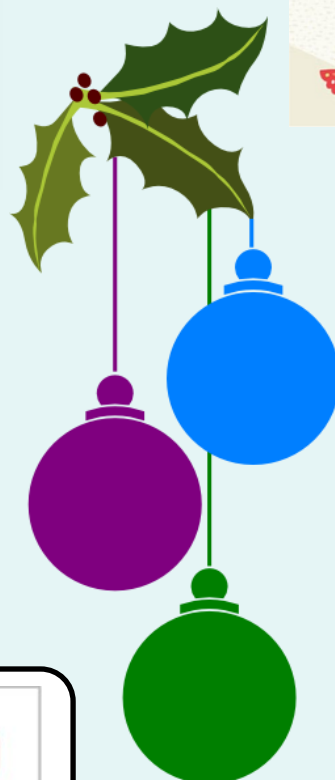
Rhymetime resumes
11.00am Wednesday 5
February, 2020.

Storytime resumes
10.30am
Thursday 6 February
Friday 7 February, 2020.

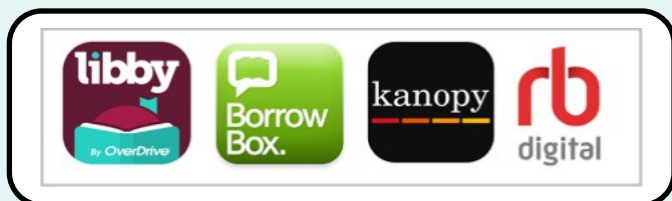
*Come along!
No booking required.*




Our last Justice of the Peace
session for 2019 will be held
on **Wednesday 11 December**.
Sessions will resume
29 January 2020



Always have access to your Library




ENGLISH AS A SECOND LANGUAGE

**Free English classes
in the Library!**

Our ESL classes are finished
for the year. They will return
in February 2020.

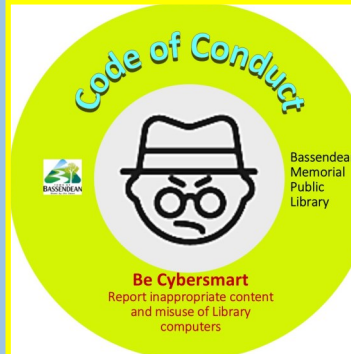
Register your interest at the
Library information desk or
call us on 9279 2966.

Bassendean Memorial Library

46 Old Perth Road, Bassendean
Western Australia 6054
Phone: (08)9279 2966
Fax: (08)9279 1869
Email: baslib@bassendean.wa.gov.au



Opening Hours
Monday 9am - 8pm
Tuesday 9am - 8pm
Wednesday 9am - 6pm
Thursday 9am - 6pm
Friday 9am - 6pm
Saturday 9am - 1pm
Closed Sundays
and Public Holidays



Code of Conduct

Be Cybersmart
Report inappropriate content
and misuse of Library
computers

Bassendean
Memorial
Public
Library