

Pictorial Timeline

West Guildford and Bassendean

1902-1954

Images sourced from Trove,
National Library of Australia

1902

[25 Dec 1902 – Bridge across the Swan at West Guildford](#)



1904

[31 Dec 1904 - THE SWAN RIVER AT GUILDFORD, SHOWING THE RAILWAY BRIDGE.](#)



1905

[28 Mar 1905 – View of Chinese Garden and River West Guildford](#)



VIEW OF CHINESE GARDEN AND RIVER, WEST GUILDFORD,

1905

[21 Mar 1905 - SUCCESS SPRING, WEST GUILDFORD. W.A.](#)



1905

[28 Feb 1905 – Lockridge Hospital West Guildford](#)



LOCKERIDGE HOSPITAL. WEST GUILDFORD.

1905

[08 Jul 1905 – Bridge Over the Swan at West Guildford](#)



Photo by

BRIDGE OVER THE SWAN AT WEST **GUILDFORD**

R. P. P. P.

1909

[25 Dec 1909 – Cuming Smith front and rear views](#)



1909

[24 Jul 1909 - ST. MARK'S MISSION HALL, WEST GUILDFORD.](#)



Photo. by:

ST. MARK'S MISSION HALL, WEST GUILDFORD.

Shaw & Co.

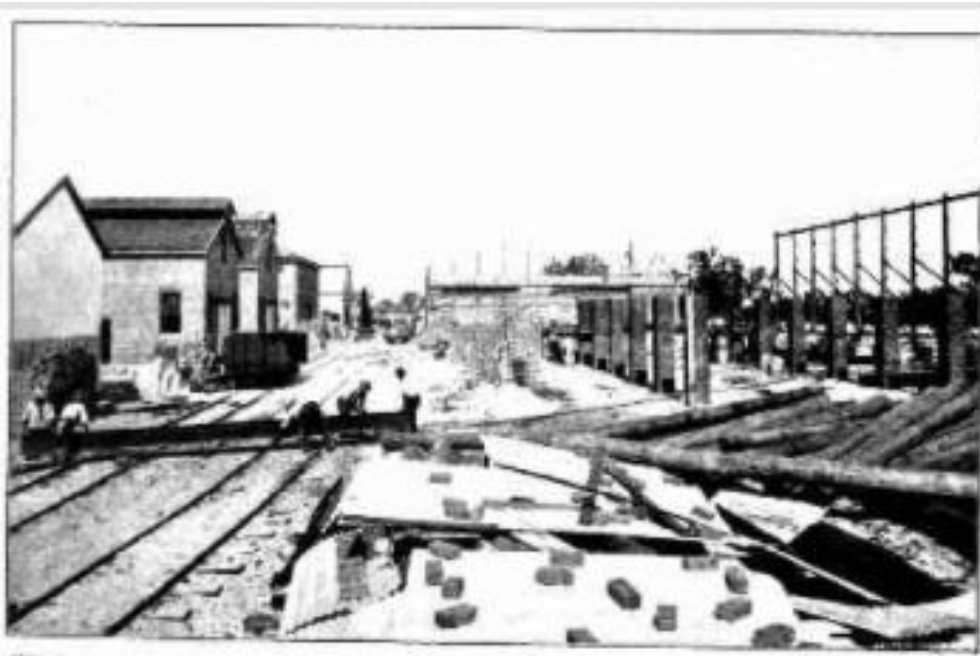
1910

[15 May 1910 – Opening of the West Guildford Railway Station](#)



1910

[05 Mar 1910 – Cuming Smith and Co Fertiliser Works at West Guildford under construction](#)



1910

[01 Oct 1910 - THE SUPERPHOSPHATE INDUSTRY](#)



1912

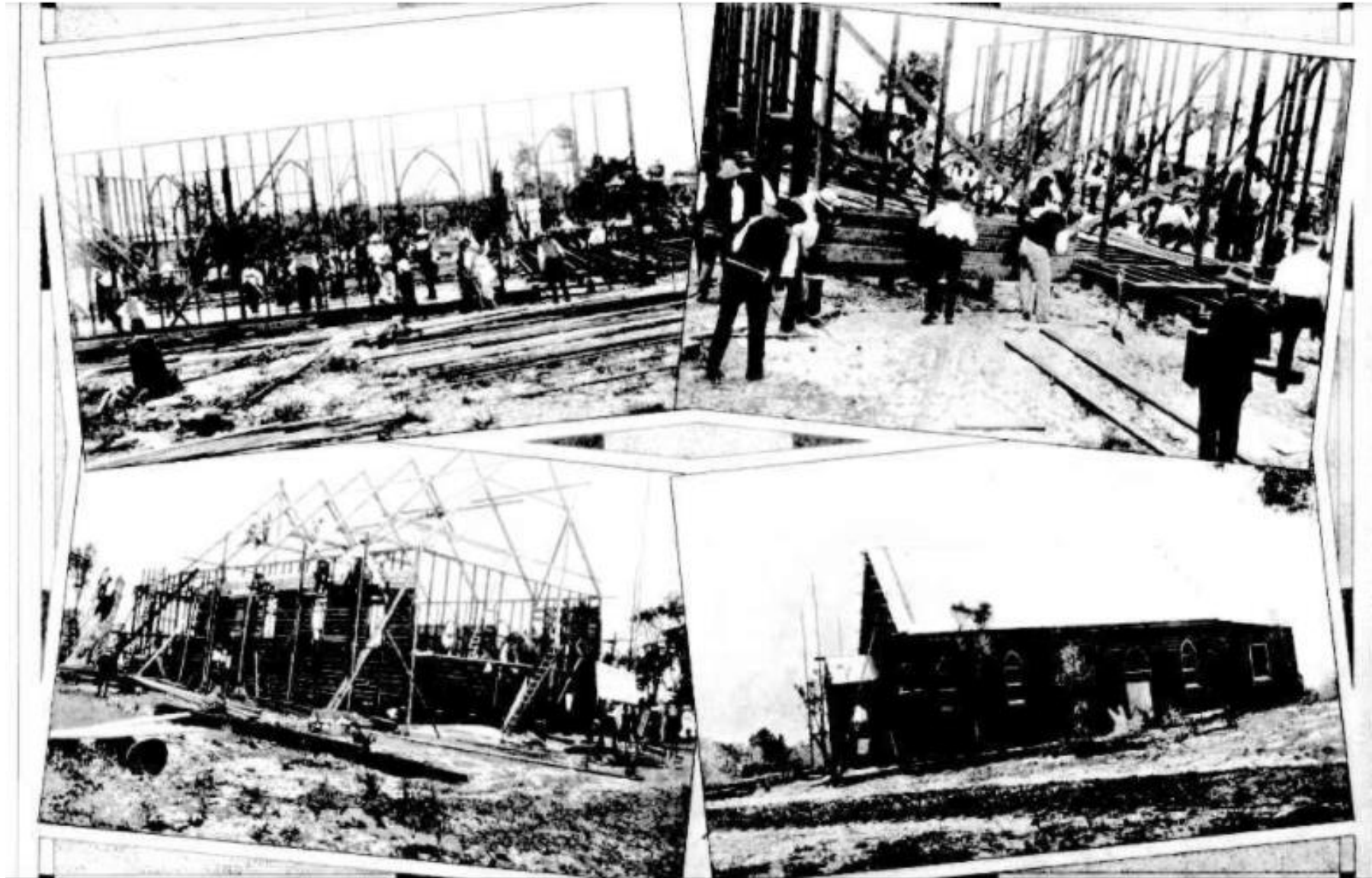
[20 Dec 1912 - NURSE BARKER'S WOMEN AND CHILDREN'S HOSPITAL.](#)

NURSE BARKER'S WOMEN AND CHILDREN'S HOSPITAL.



1913

10 Jan 1913 - BUILT IN A DAY—THE CHURCH OF CHRIST, WEST GUILDFORD.



1914

[24 Jul 1914 - GATHERING AT THE CHILDREN'S FANCY DRESS BALL AT WEST GUILDFORD.](#)



1914

[His Grace the Archbishop at West Guildford Blessing and Opening of a New School-Church](#)



New Catholic Church at West Guildford.

1914

18 Dec 1914 - CHILDREN'S GALA DAY AT WEST GUILDFORD.



BASSENDEN RIVER RESERVE.

1914

19 Dec 1913 - OPENING OF THE LATEST RIVERSIDE PARK—A GALA DAY AT WEST GUILD FORD



1914

[15 Mar 1914 – A new park for the people](#)



1914

10 Jul 1914 - THE INAUGURAL CONCERT OF THE WEST GUILDFORD ORCHESTRAL SOCIETY. ASSISTED THE WEST GUILDFORD CHORAL SOCIETY.



1914

[10 Jul 1914 – Cuming Smith and Co fertiliser works](#)



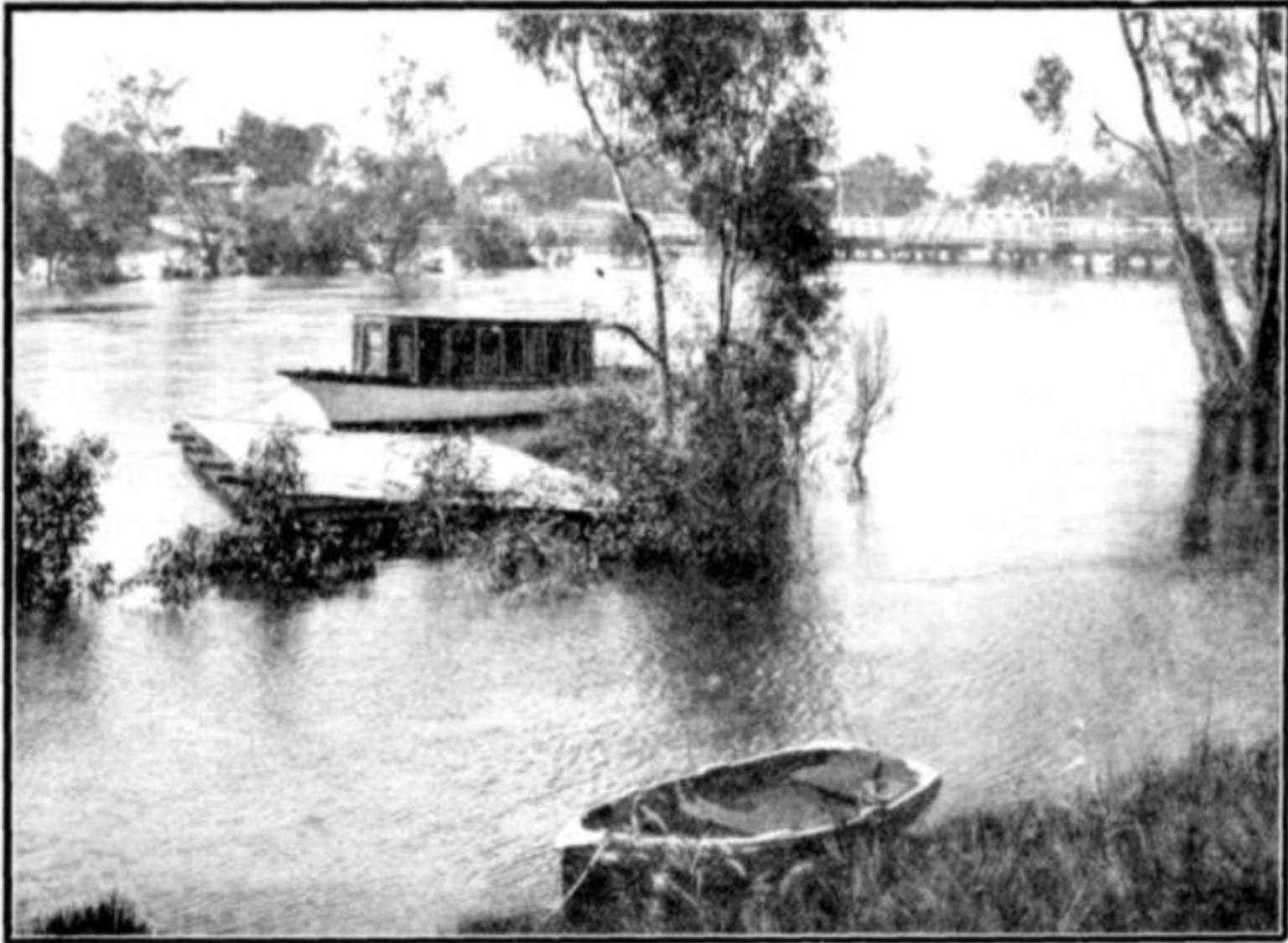
1915

[05 Mar 1915 - LAST WEEK'S SENSATIONAL STORM St Marks Anglican Church West Guildford.](#)



1915

[13 Aug 1915 - The Swan River in Flood—Scenes at Guildford.](#)



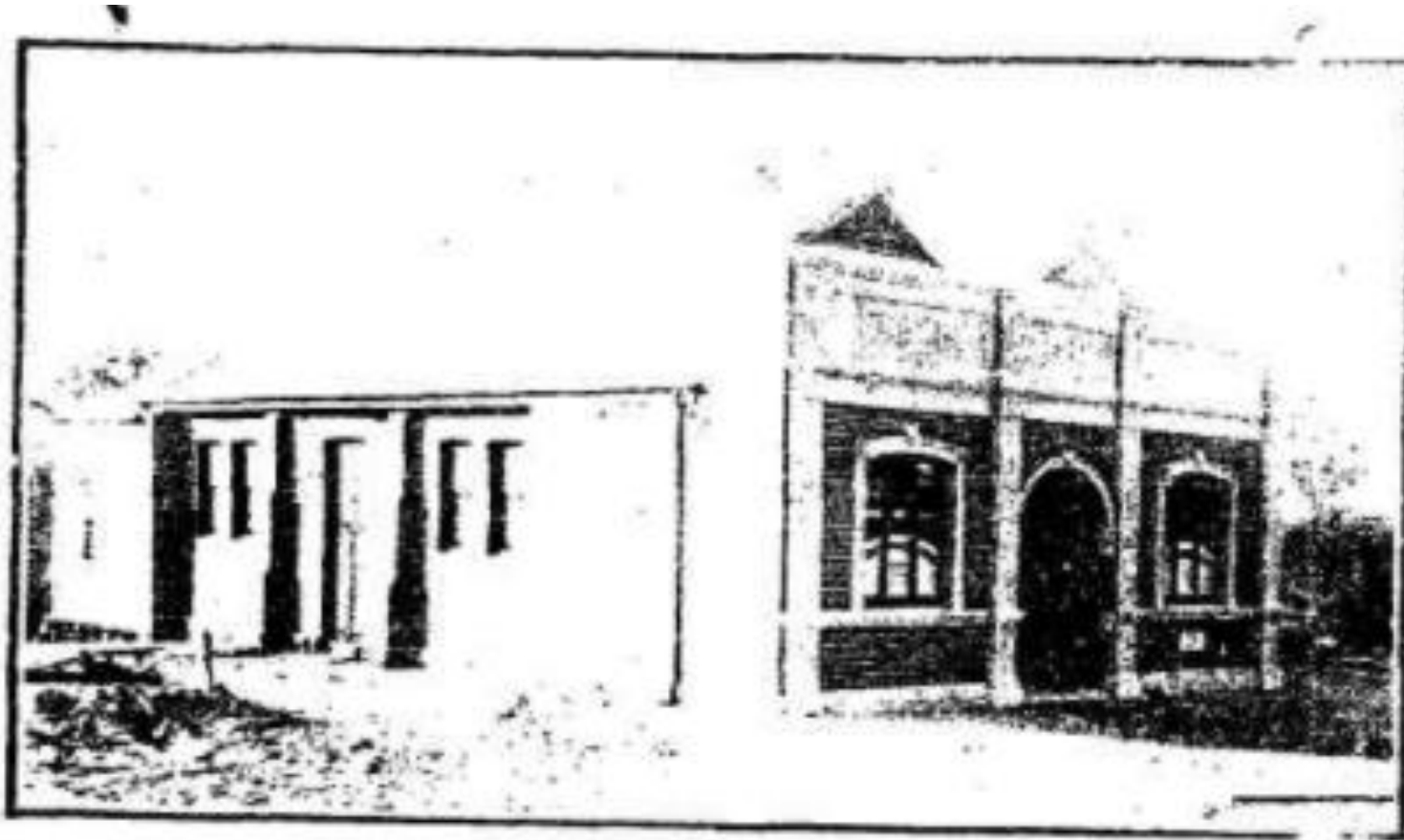
1917

[26 Jan 1917 – The West Guildford Sub Station](#)



1918

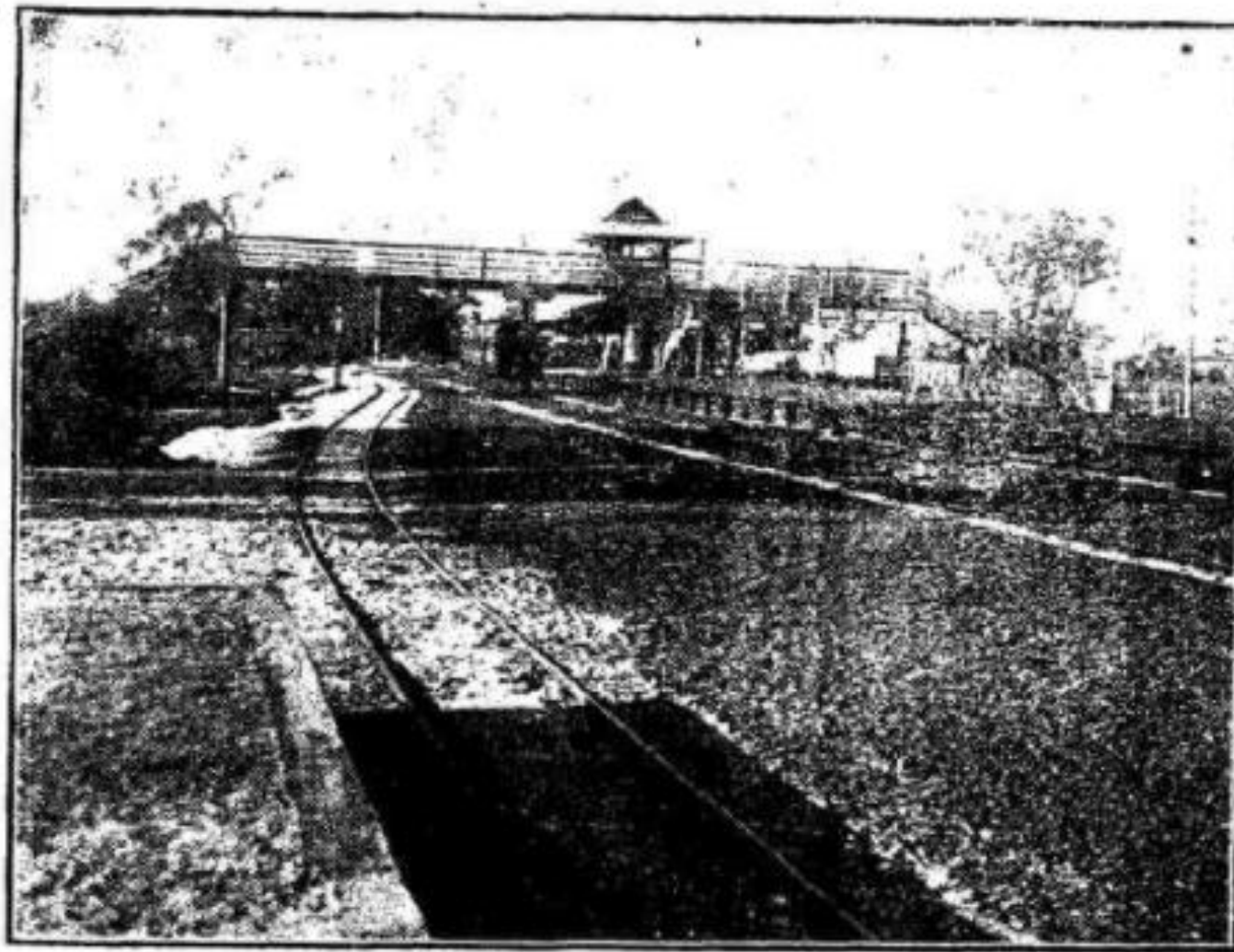
[20 Dec 1918 - WEST GUILDFORD ROAD BOARD HALL](#)



WEST GUILDFORD ROAD BOARD HALL.

1918

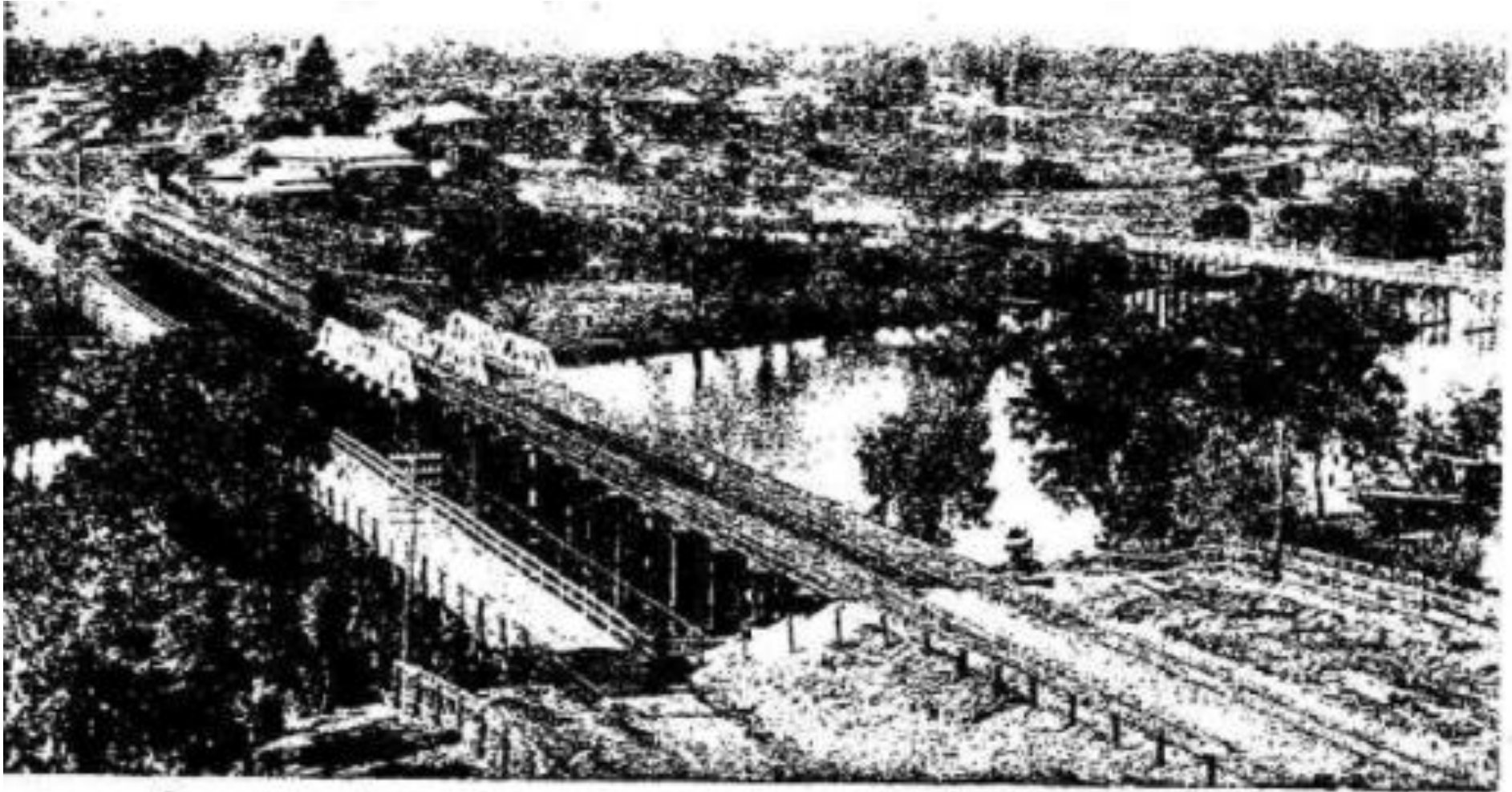
[20 Dec 1918 - WEST GUILDFORD RAILWAY STATION](#)



WEST GUILDFORD RAILWAY STATION.

1918

[20 Dec 1918 - GUILDFORD—WEST GUILDFORD BRIDGES](#)



GUILDFORD—WEST GUILDFORD BRIDGES.

1918

[01 Mar 1918 – Picnicking on the Swan at West Guildford](#)



1920

[13 Nov 1920 - WEST GUILDFORD picnic \(description\)](#)

[20 Nov 1920 – West Guildford Parishioners Picnicing \(image\)](#)

A WORTHY EXAMPLE.

WEST GUILDFORD PARISHIONERS PICNICING.



The above block should have appeared with the West Guildford Notes which explained it last week, but owing to extreme pressure on space, was reluctantly held over.

1920

[17 Dec 1920 - WEST GUILDFORD SOLDIERS' MEMORIAL.](#)



1921

[18 Sep 1921 - THE STEEL INDUSTRY](#)



*1,000-horse power electric furnace in course of erection at the Aust. Electric Steel Co.'s Works,
West Guildford*

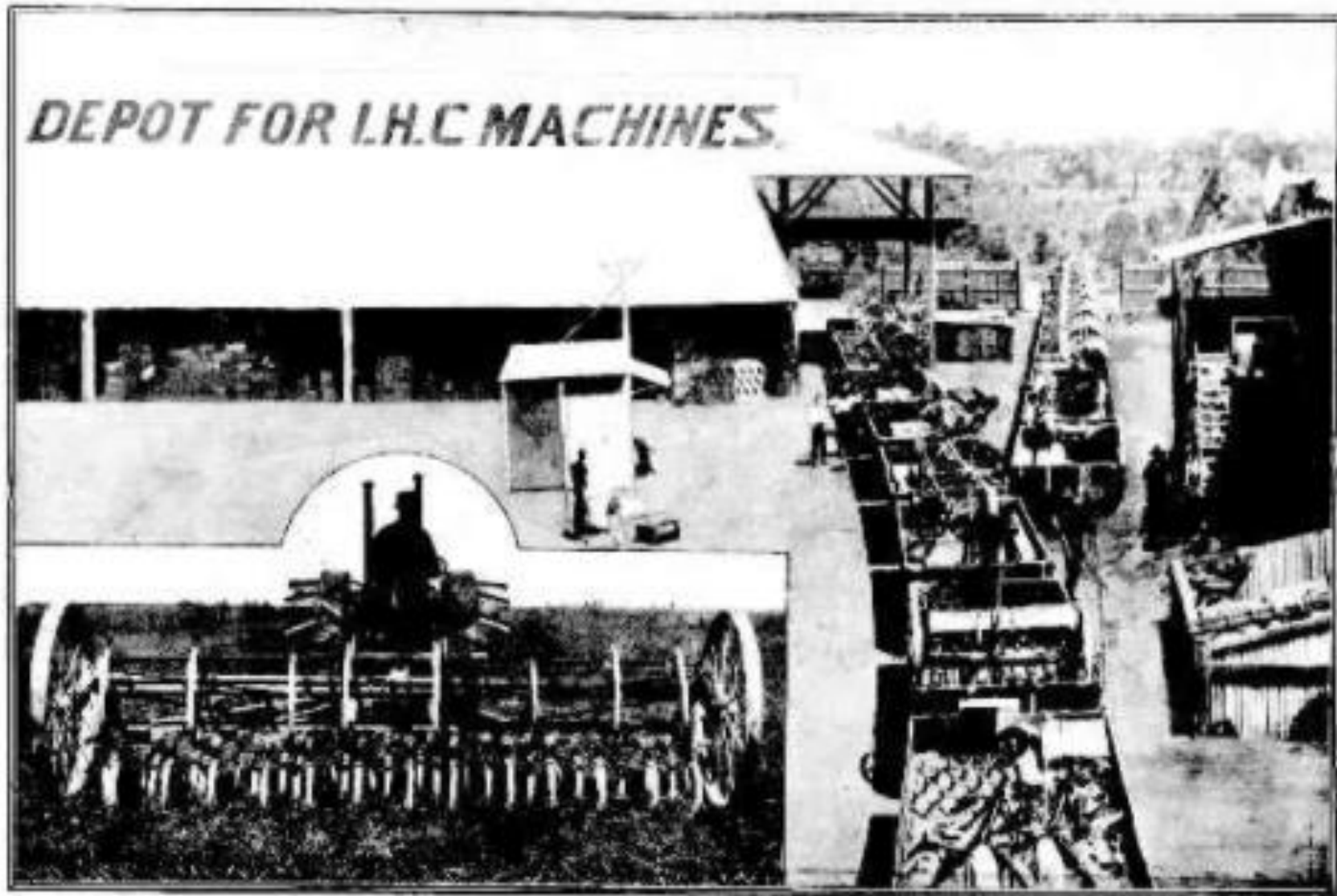
1921

[07 Aug 1921 – Flashlight of the Ugliers Ball at West Guildford](#)



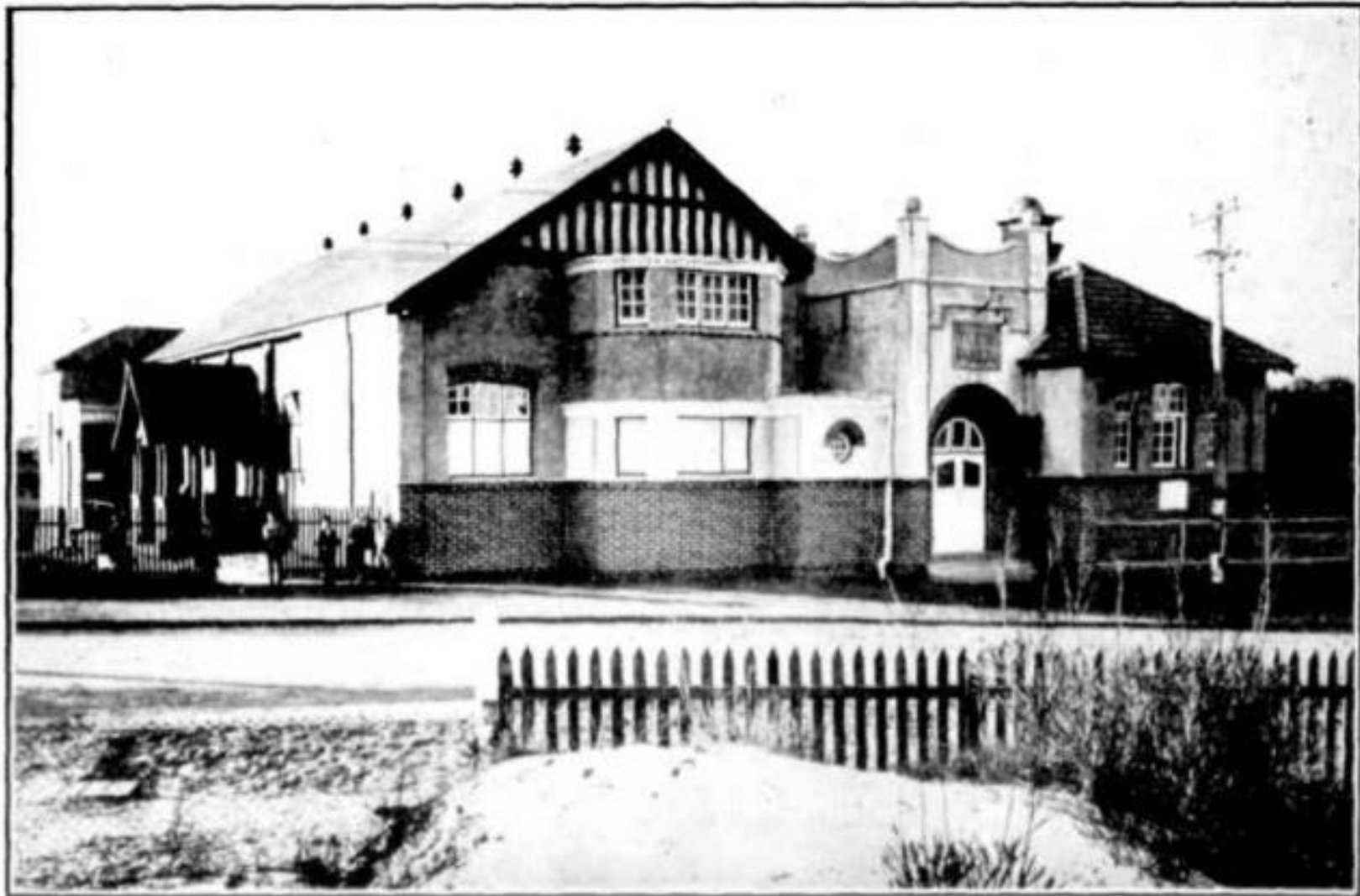
1922

[23 Mar 1922 – View of Richard Purse and Co's Private Railway Siding at West Guildford](#)



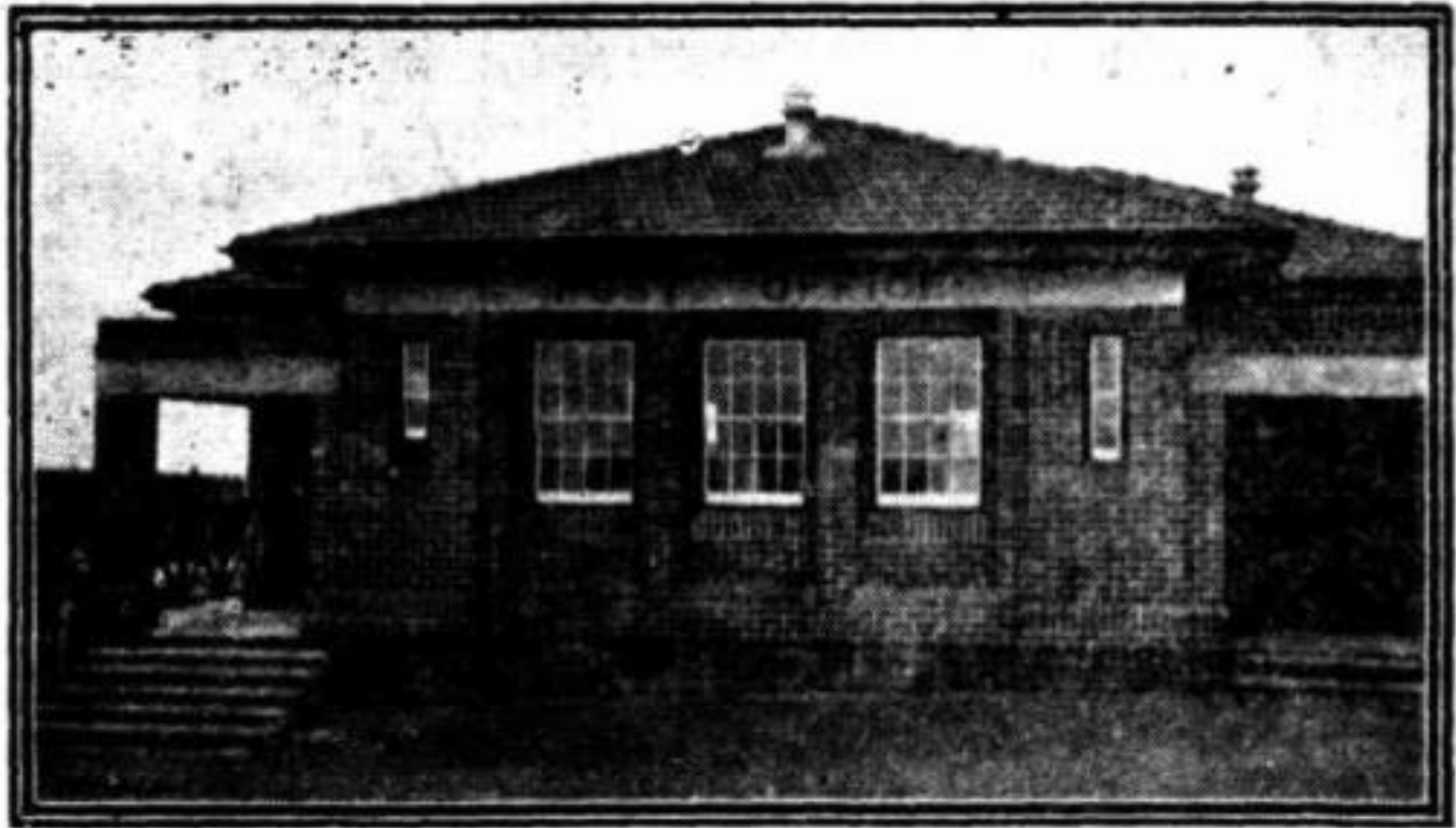
1922

[10 Aug 1922 - New Town Hall, West Guildford](#)



1923

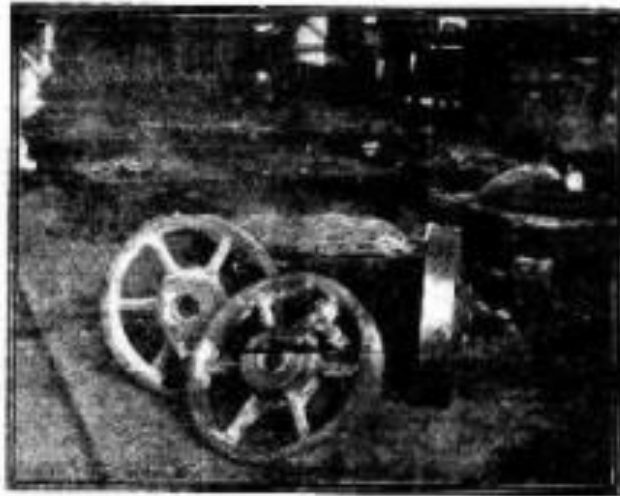
[30 Sep 1923 - THE NEW POST OFFICE AT BASSENDEAN.](#)



1924

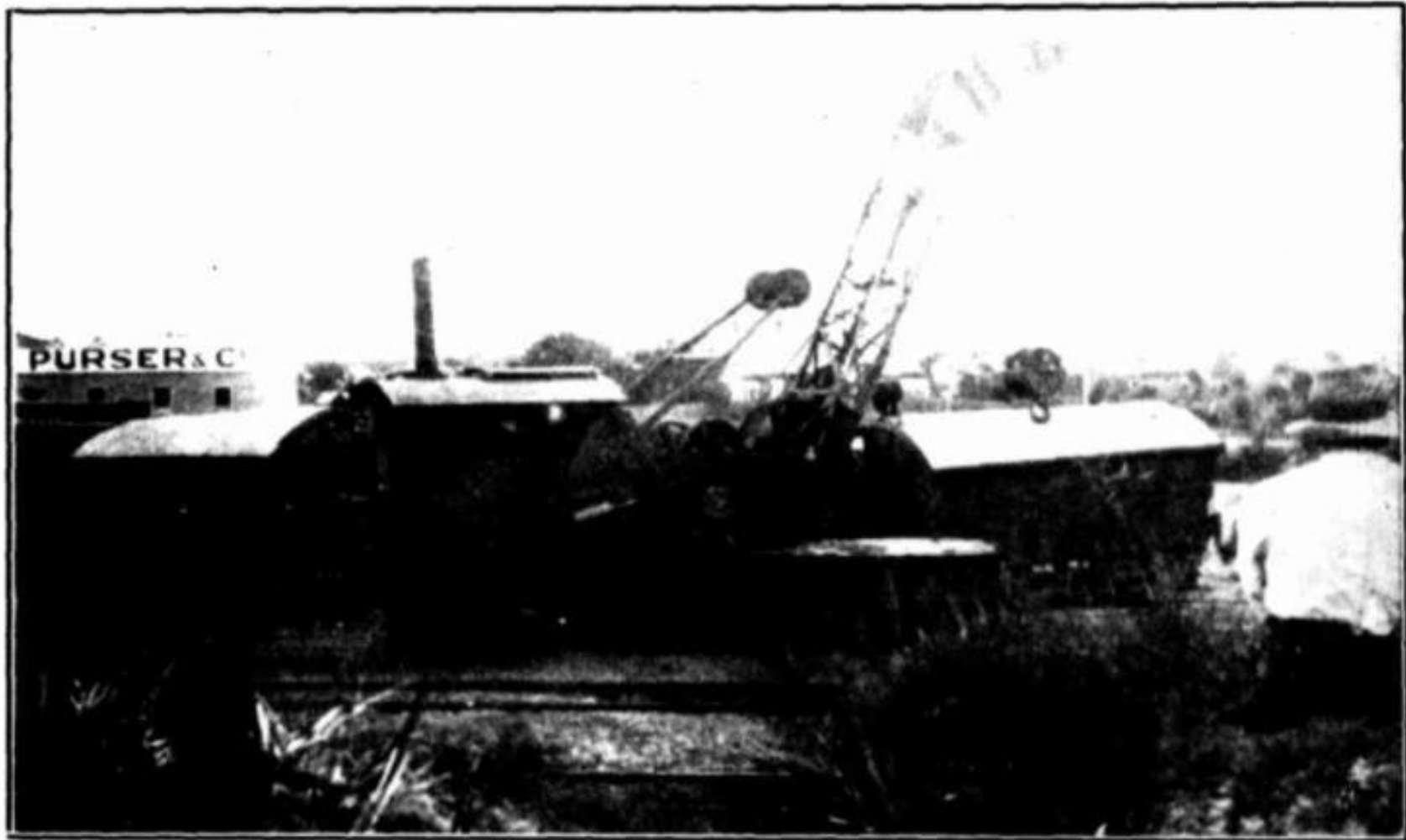
[27 Jan 1924 - A New Secondary Industry Situated at Bassendean - Hadfield's](#)

A New Secondary Industry Situated at Bassendean



1925

[23 Apr 1925 – An Easter Railway Incident](#)



1926

[13 Jun 1926 - A BASSENDEAN "ROAD"](#)



A BASSENDEAN "ROAD"

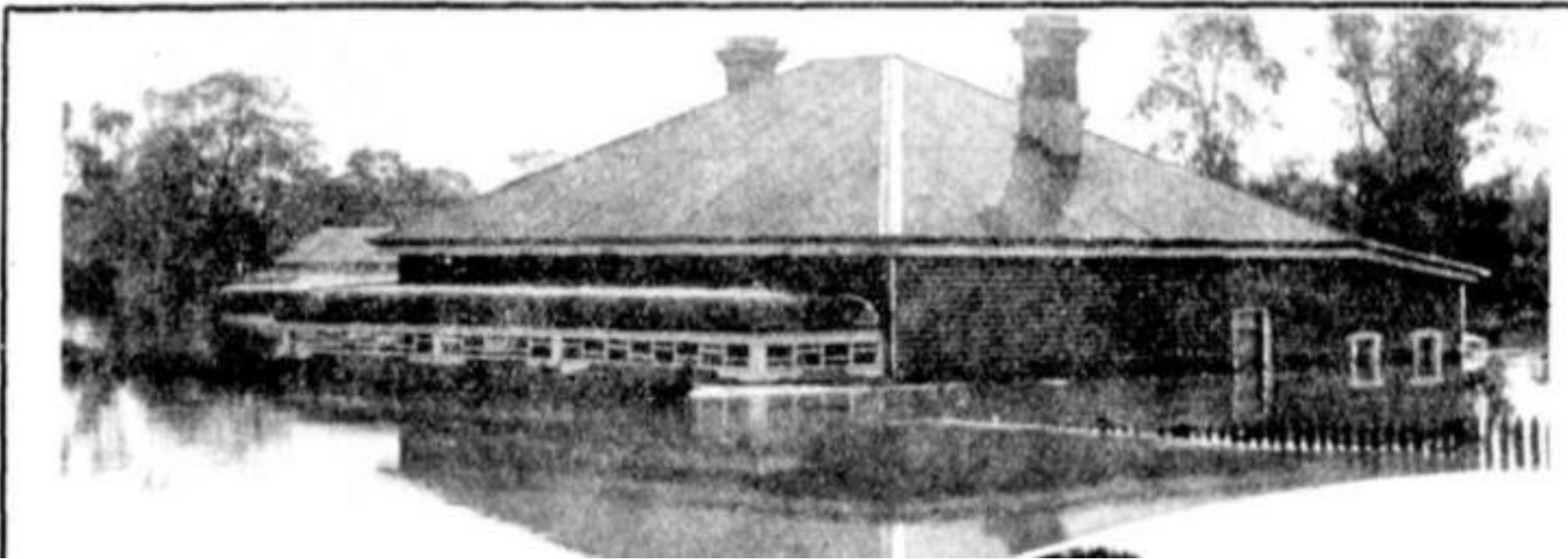
1926

[19 Sep 1926 - THROUGH WHICH THE CHILDREN GO TO SCHOOL.](#)



1926

[29 Jul 1926 - FLOOD PHASES AT GUILDFORD, BASSENDEAN, UPPER SWAN, MUNDARING WEIR AND MAYLANDS.](#)



1926

[10 Jan 1926 - Briarsleigh](#)



1927

[13 Feb 1927 - BRIARSLEIGH](#)



1928

[29 Nov 1928 - MOTHERS AND DAUGHTERS' BANQUET AT BASSENDEAN.](#)



1929

17 Oct 1929 - MAKING A SUBURBAN RECREATION GROUND.



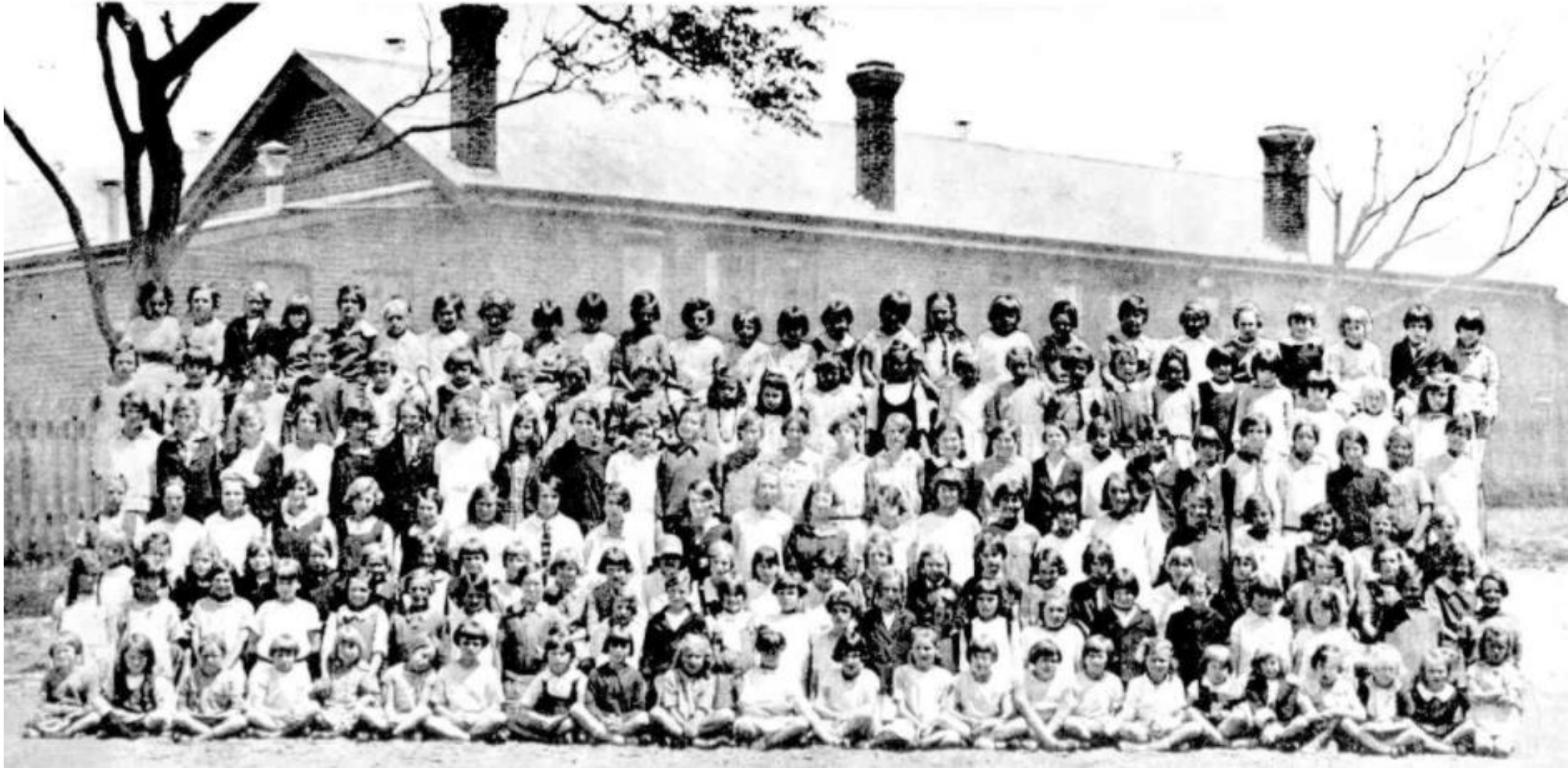
1929

[17 Jan 1929 - METROPOLITAN STATE SCHOOLS: Bassendean Boys](#)



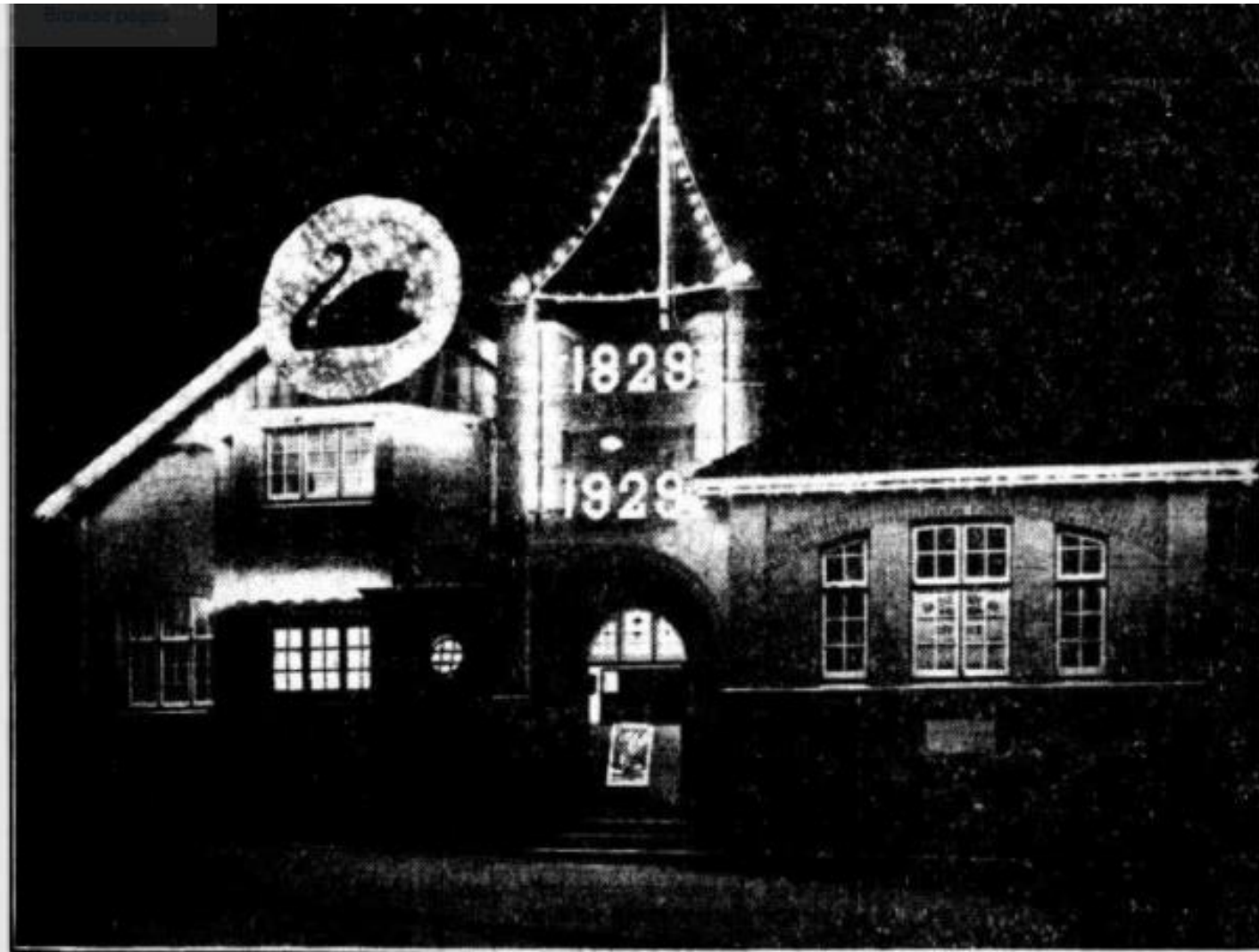
1929

[24 Jan 1929 – Bassendean School Girls \(students\)](#)



1929

[22 Nov 1929 - BASSENDEAN TOWN HALL](#)



BASSENDEAN TOWN HALL
Illuminated for the Centenary Celebrations.

1929

[22 Aug 1929 - A NIGHT IN JAPAN: Big Ball at Bassendean.](#)



1929

[10 Dec 1929 - THE MAIN ENTRANCE TO THE NEW BASSENDEAN RECREATION RESERVE](#)



THE MAIN ENTRANCE TO THE NEW BASSENDEAN RECREATION RESERVE.

The Bassendean Road Board is spending several thousands of pounds in preparing the Bassendean Recreation Ground for league football use. A team from the eastern suburbs with its headquarters at Bassendean will be admitted into the league in two years' time. The entrance gates were unveiled on Saturday by the Premier (Mr. P. Collier).

1929

[08 Dec 1929 – Bassendean Recreation Reserve Memorial Tablet Unveiling](#)



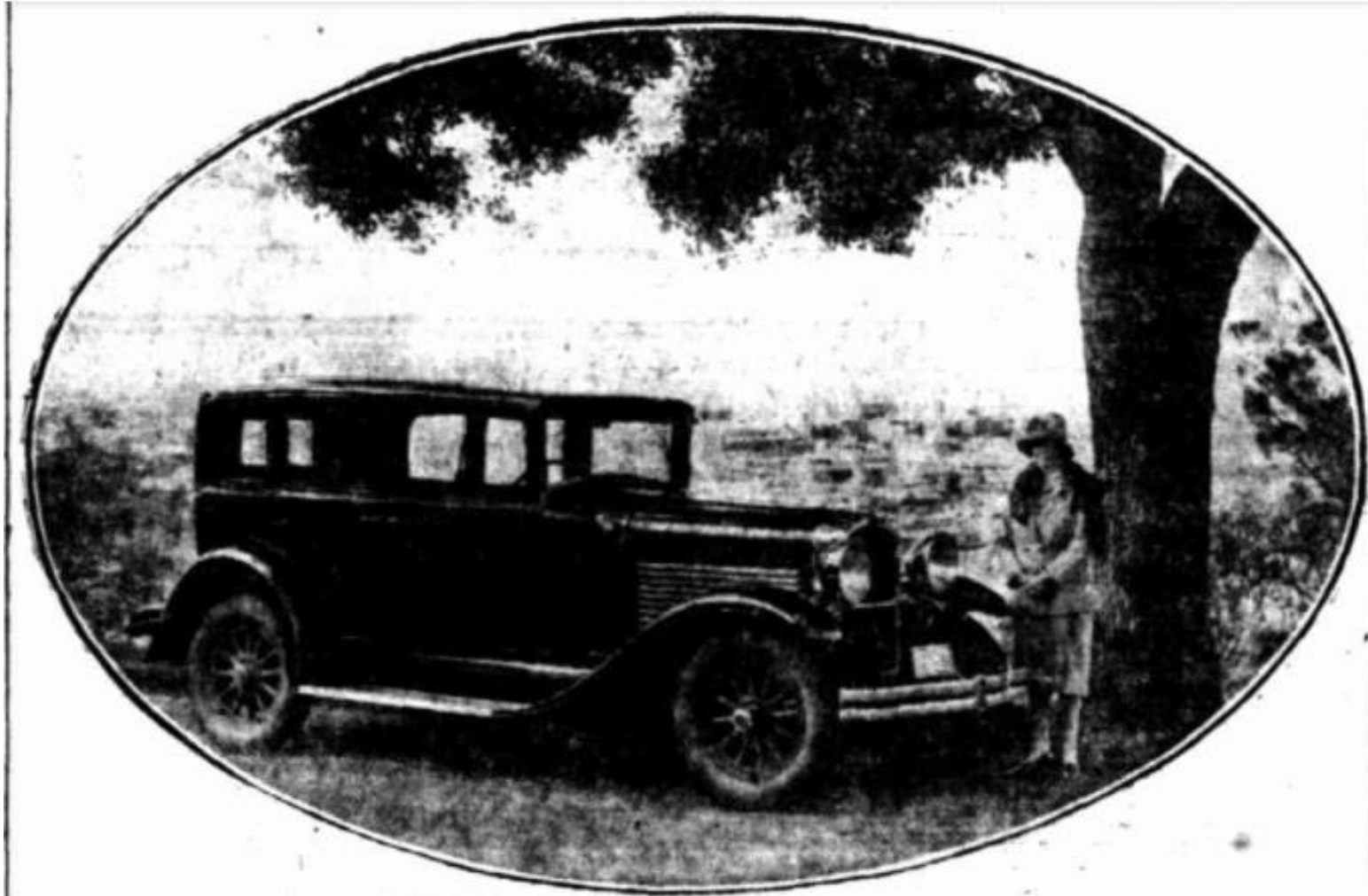
1929

[09 Dec 1929 - UNVEILING MEMORIAL TABLET.](#)



1929

[04 Aug 1929 - A BASSENDEAN MOTORIST](#)



1930

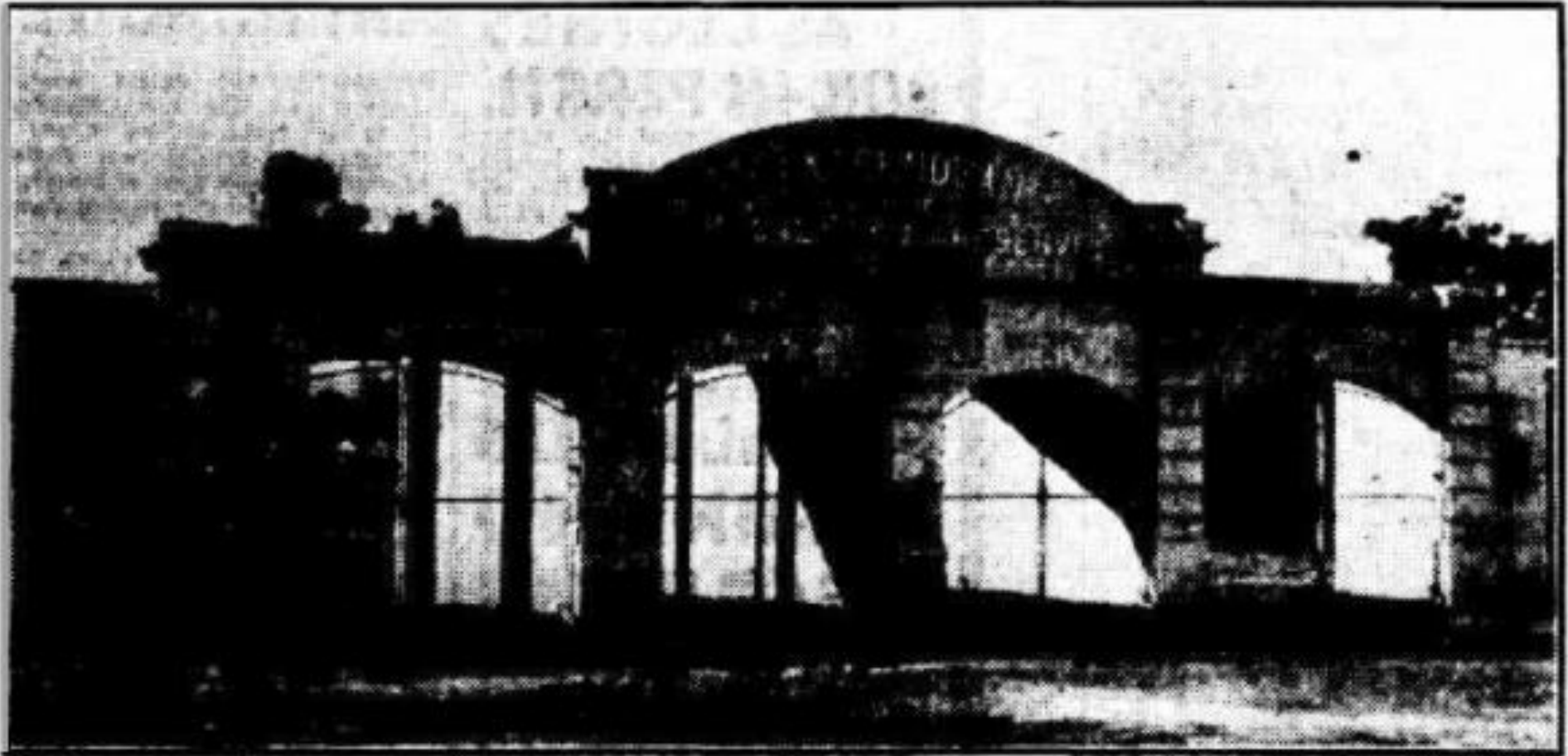
[24 May 1930 - MASSES OF GLADIOLI AT BASSENDEAN.](#)



1932

[03 Jun 1932 - NEW FOOTBALL GROUND.](#)

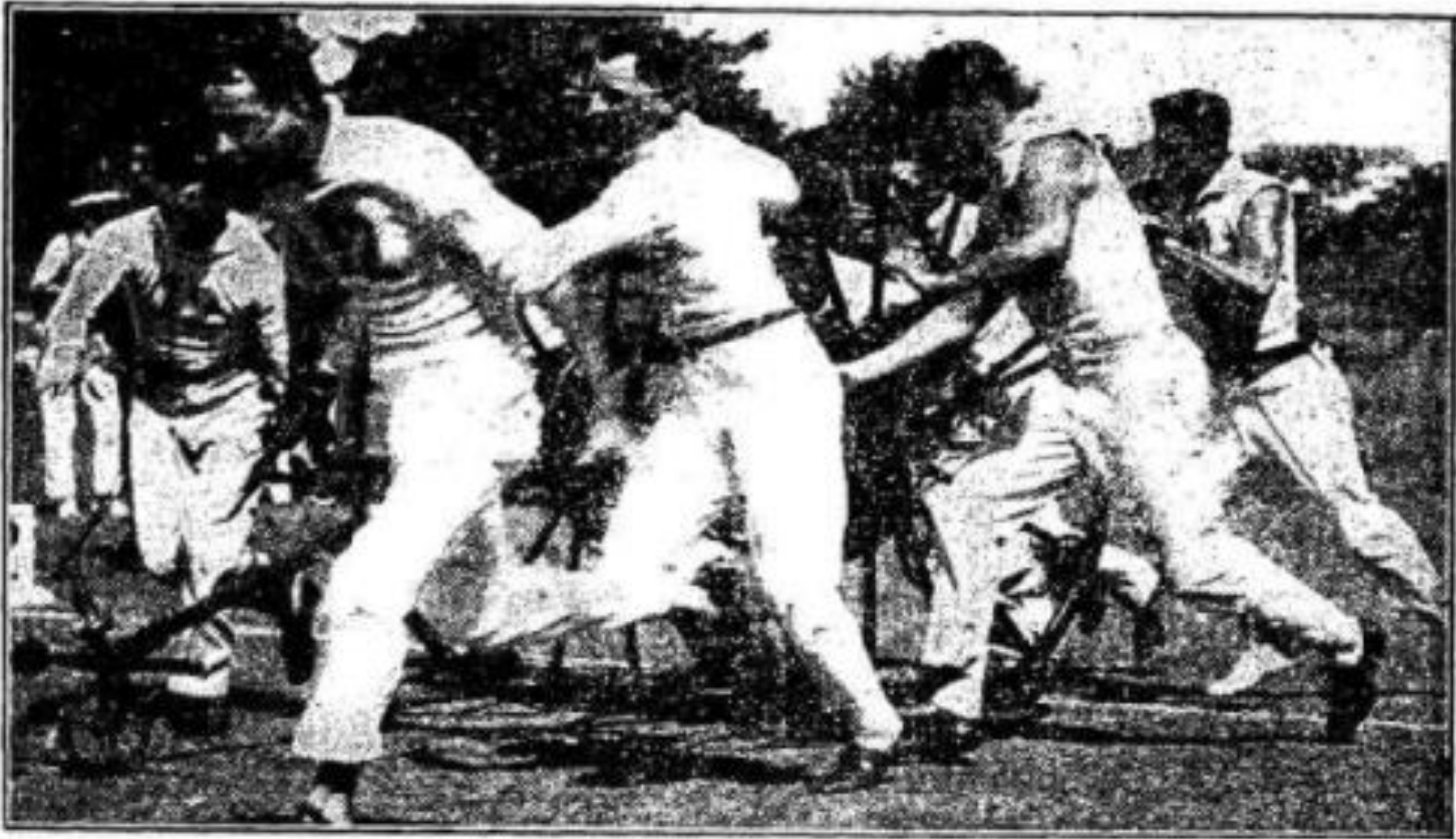
NEW FOOTBALL GROUND.



The entrance to the new Bassendean recreation reserve, which is to be officially opened to-morrow afternoon.

1929

[07 Apr 1929 - BASSENDEAN TEAM IN ACTION](#)



1930

[15 Apr 1930 - A CREST FOR BASSENDEAN.](#)



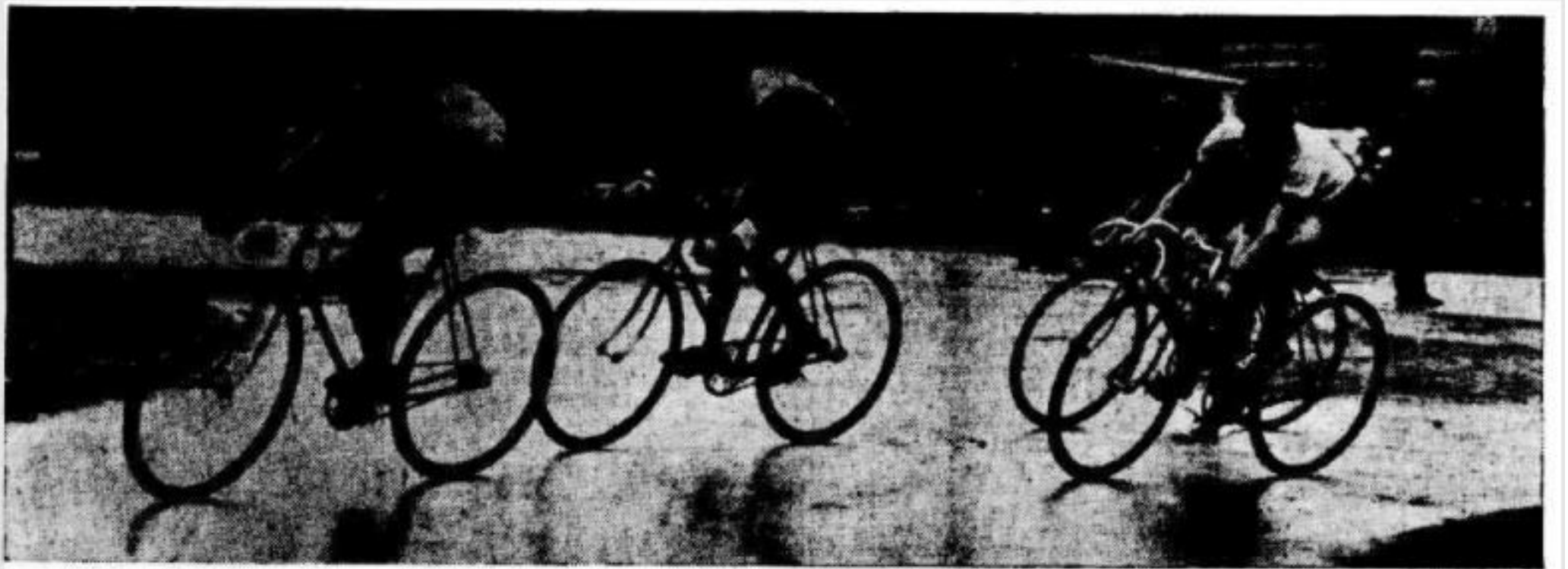
1932

[18 Jul 1932 - NEW TRADES HALL OPENED.](#)



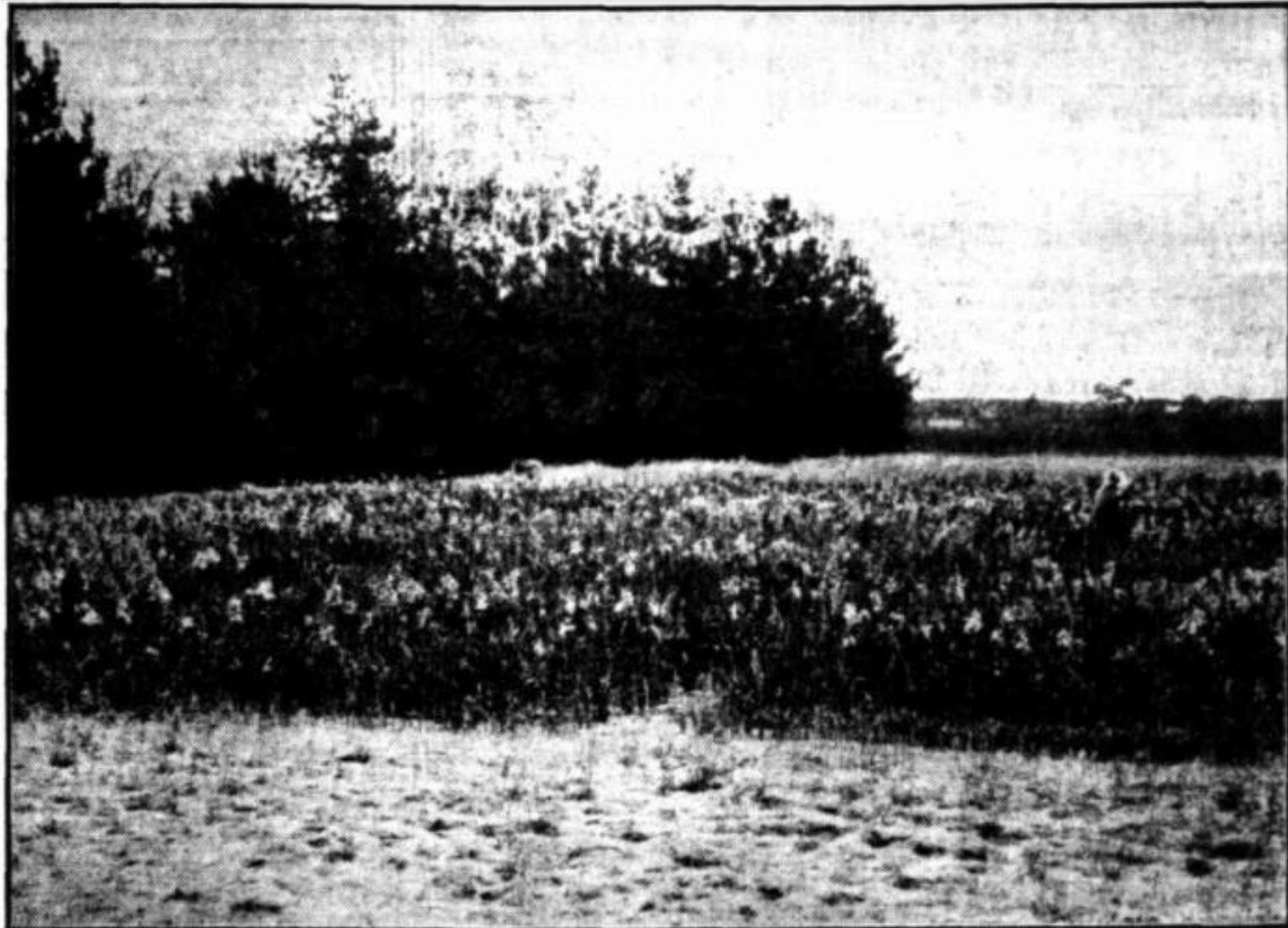
1933

[05 Jun 1933 - CYCLING ON SLIPPERY ROADS](#)



1933

[26 Nov 1933 – Mondoo Glads Nursery, West Road, Bassendean](#)



1933

[05 Jan 1933 - CUMING SMITH & MOUNT LYELL FARMERS FERTILISERS, LTD.](#)



VIEW OF CUMING SMITH AND MT. LYELL FARMERS' FERTILISERS WORKS, BASSENDEAN.

1933

[26 Oct 1933 - BASSENDEAN FOOTBALL CLUB.](#)

BASSENDEAN FOOTBALL CLUB.



The Bassendean District Football Club, premiers this year of the Perth Surban Football Association. From these players and the Midland Association side the new team which will play in the league next year will be formed.

1933

[18 Jun 1933 - Preparing for Better Things Next Year](#)



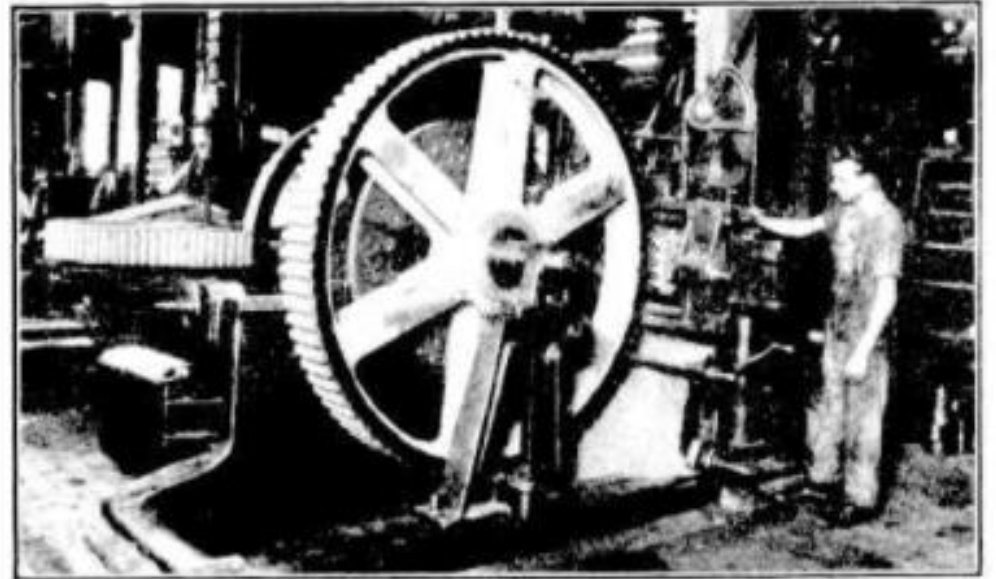
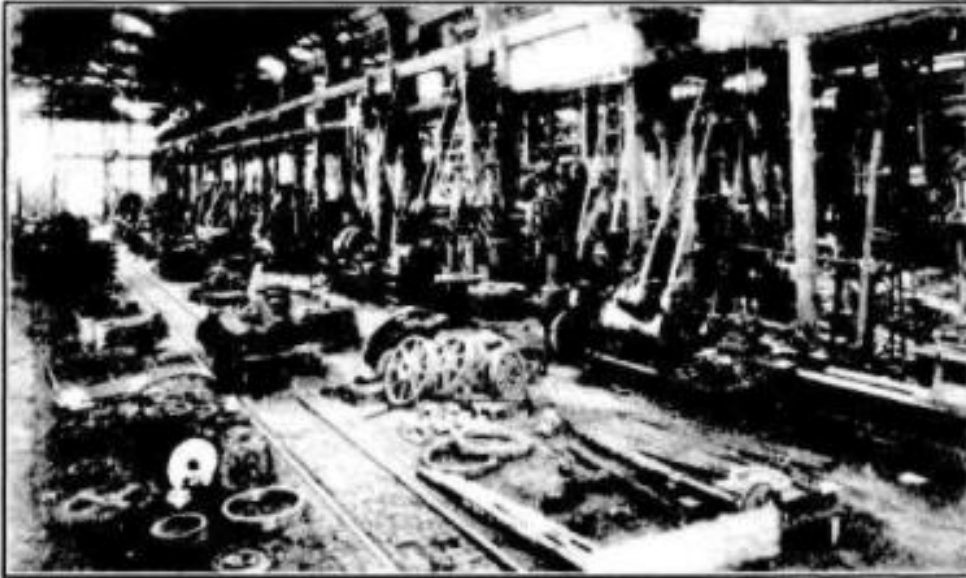
1933

[25 May 1933 - Bassendean School Children.](#)



1933

[27 Jul 1933 - A Modern Engineering Workshop.](#)



1934

[01 Jul 1934 - SOME PUPILS OF THE BASSENDEAN SCHOOL](#)



1934

[10 Feb 1934 - FIRE STATION OPENED](#)



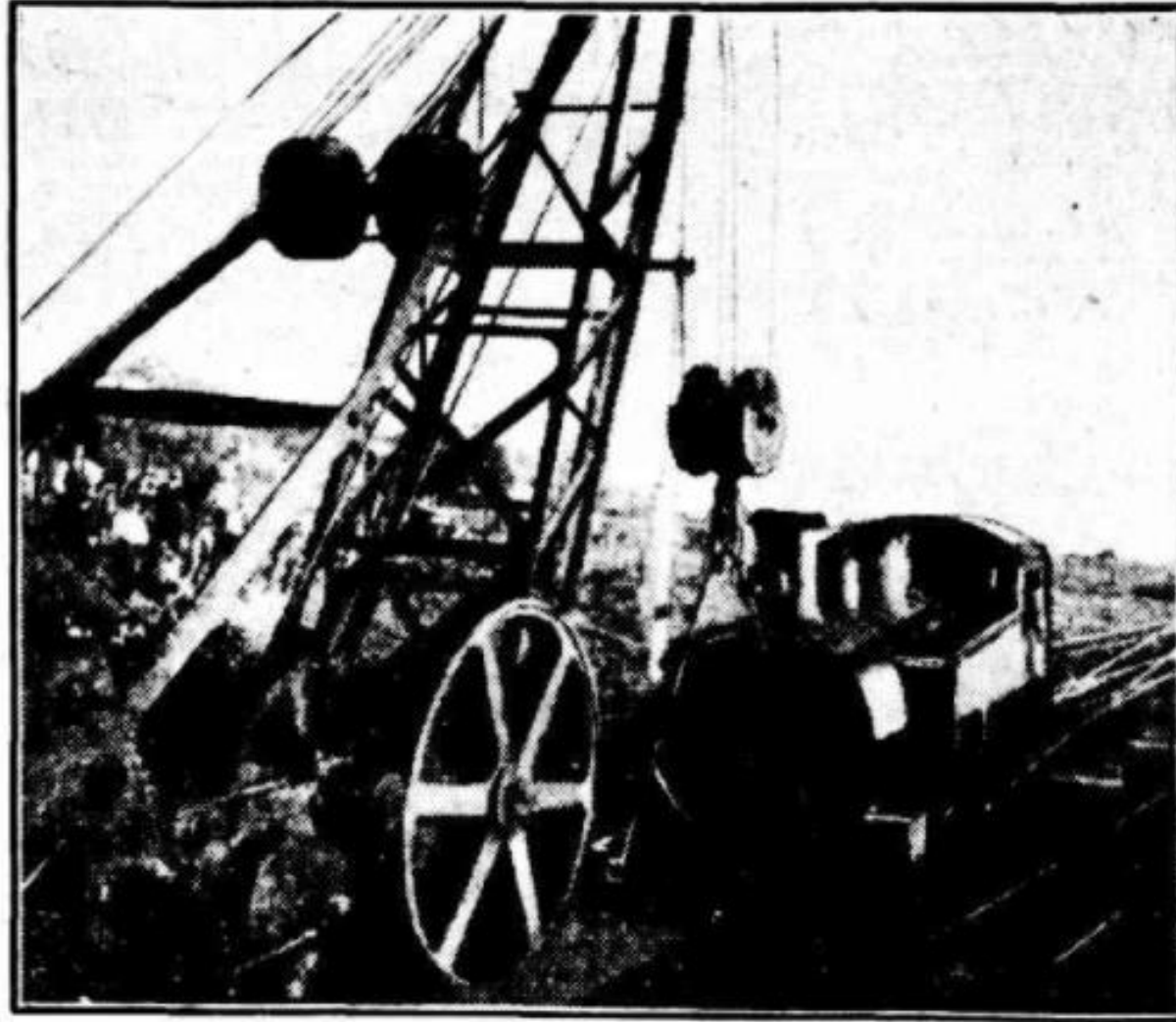
1934

[12 Feb 1934 - NEW FIRE STATION OPENED.](#)



1934

[25 Apr 1934 - RAILWAY DERAILMENT.](#)



[I.](#)

1934

[05 May 1934 - FIRST MATCH ON NEW GROUND](#)



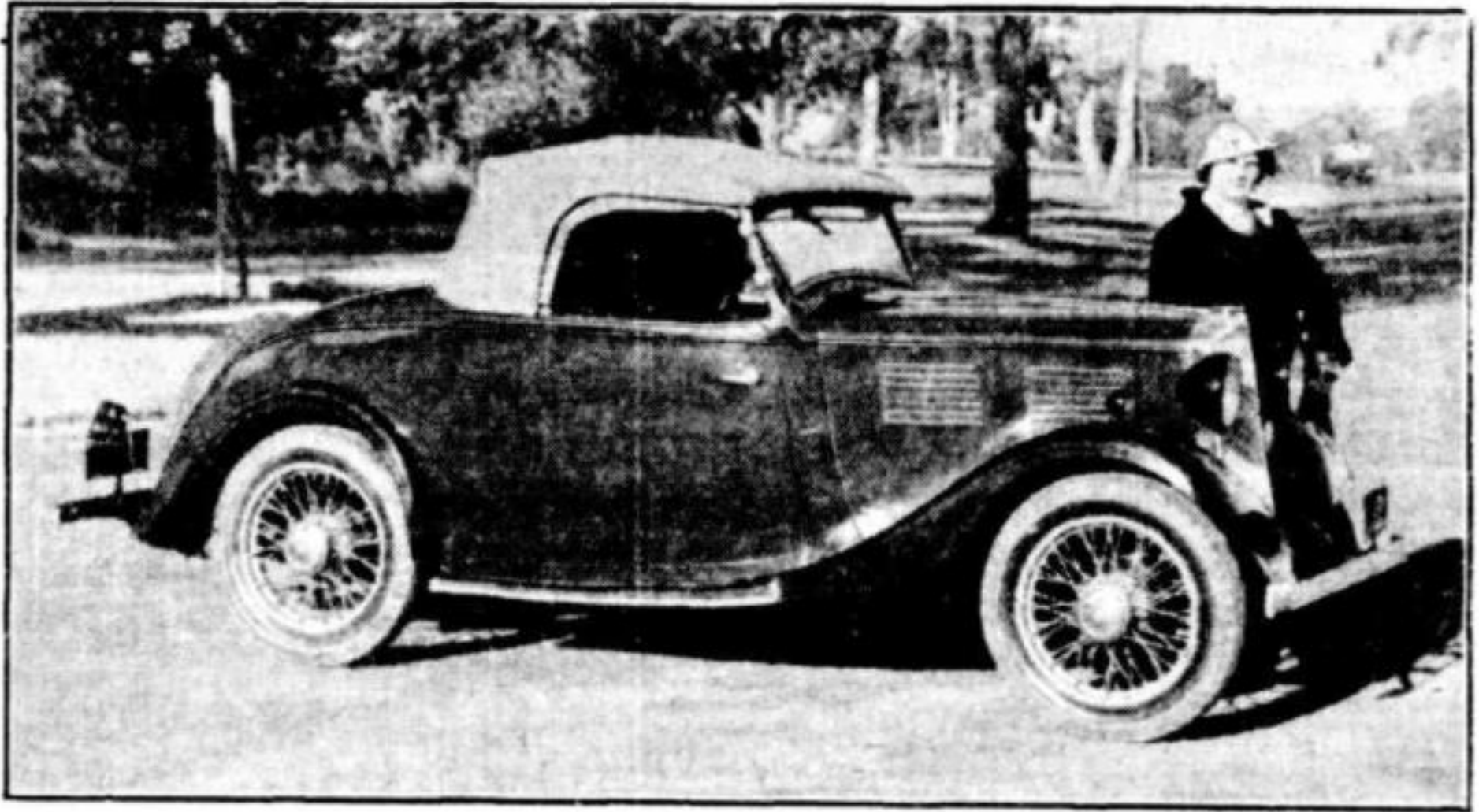
1934

[23 Apr 1934 - SPECTACULAR FOOTBALL IN PRACTICE GAME.](#)



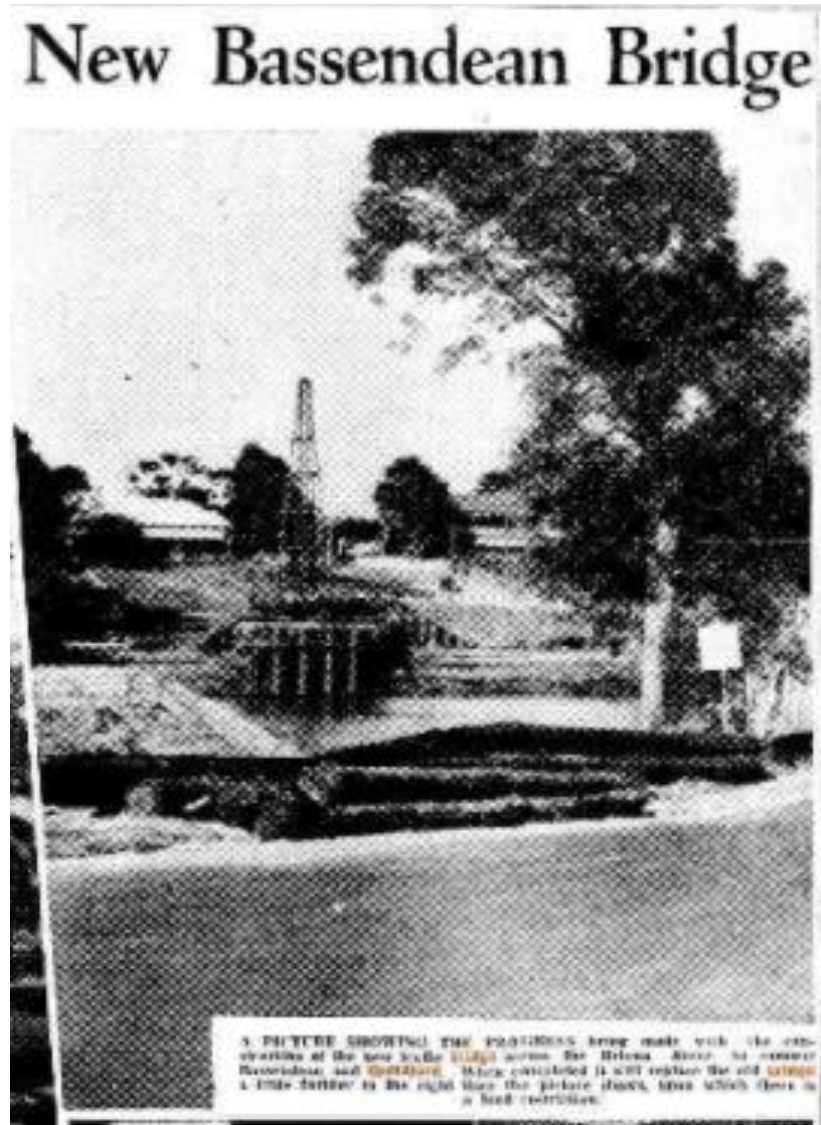
1934

[04 Nov 1934 – Mrs Lammonby with her Roadster](#)



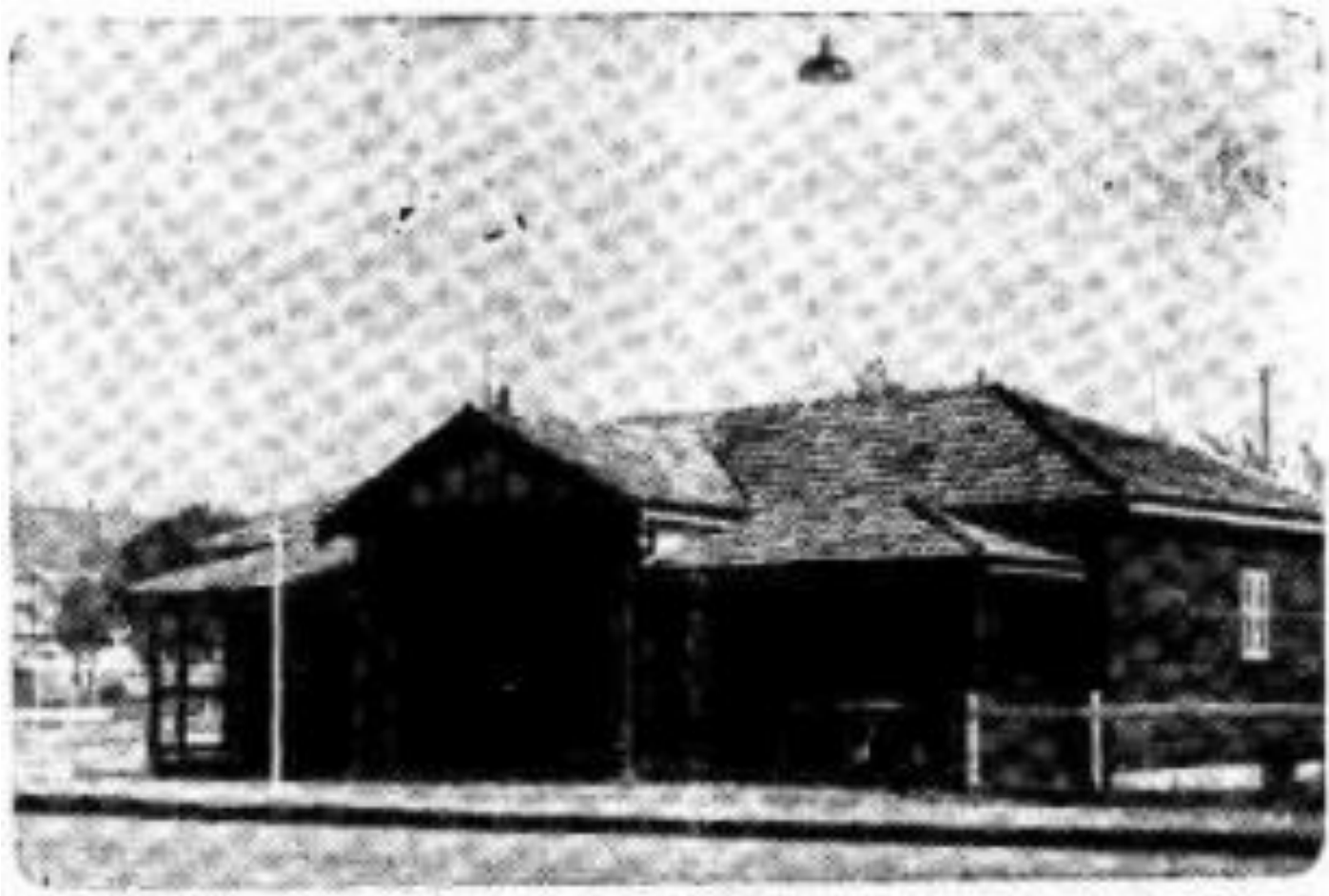
1935

[07 Nov 1935 - New Bassendean Bridge](#)



1935

[08 Nov 1935 - SPACIOUS SPORTS PAVILION -](#)



1935

[12 Dec 1935 – Spanning the river](#)



SPANNING THE RIVER: Progress on the new bridge across the Swan River between Guildford and Bussellton.

1935

[08 Nov 1935 - BASSENDEAN'S "CASTLE"](#)



1935

[09 Nov 1935 - OPENING OF BASSENDEAN SPORTS RESERVE](#)



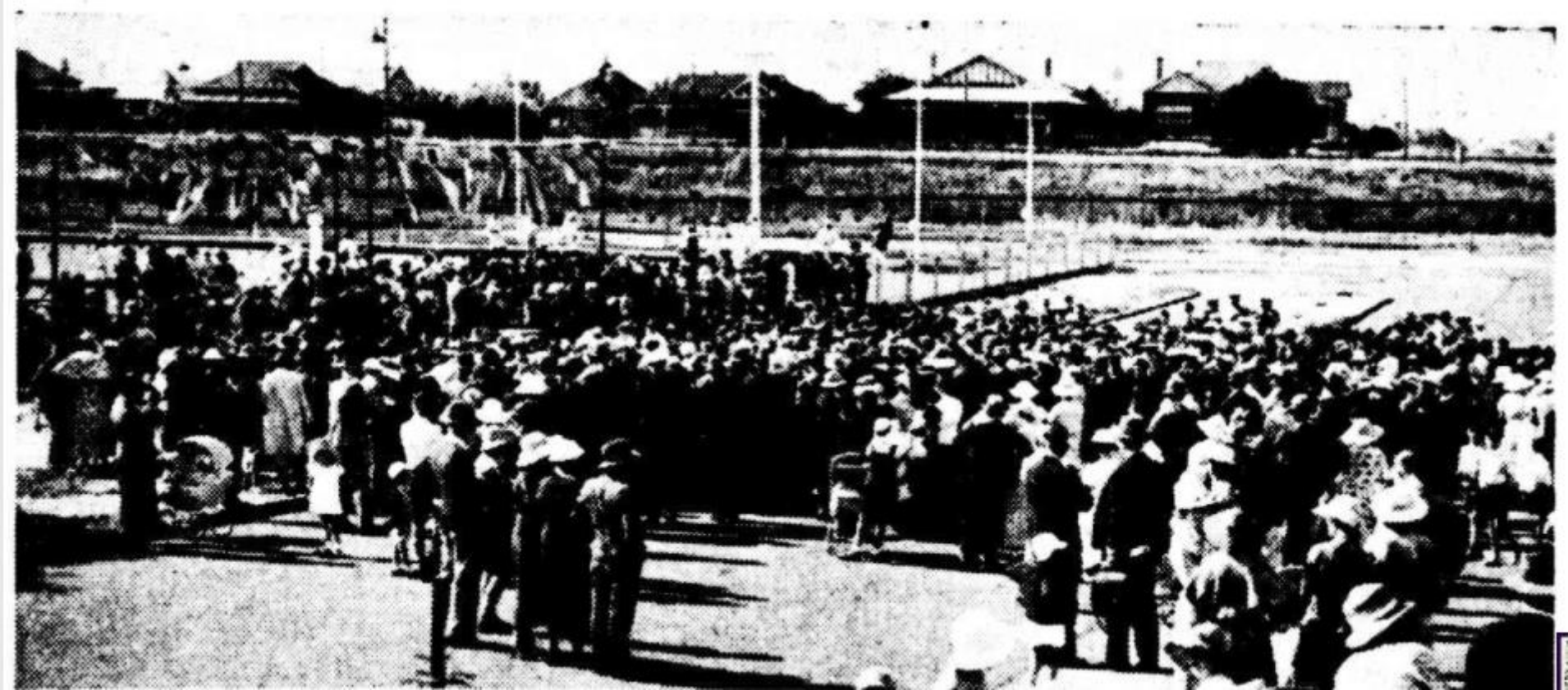
1935

[08 Nov 1935 - Basserdean's Ideal Civic Developmen](#)



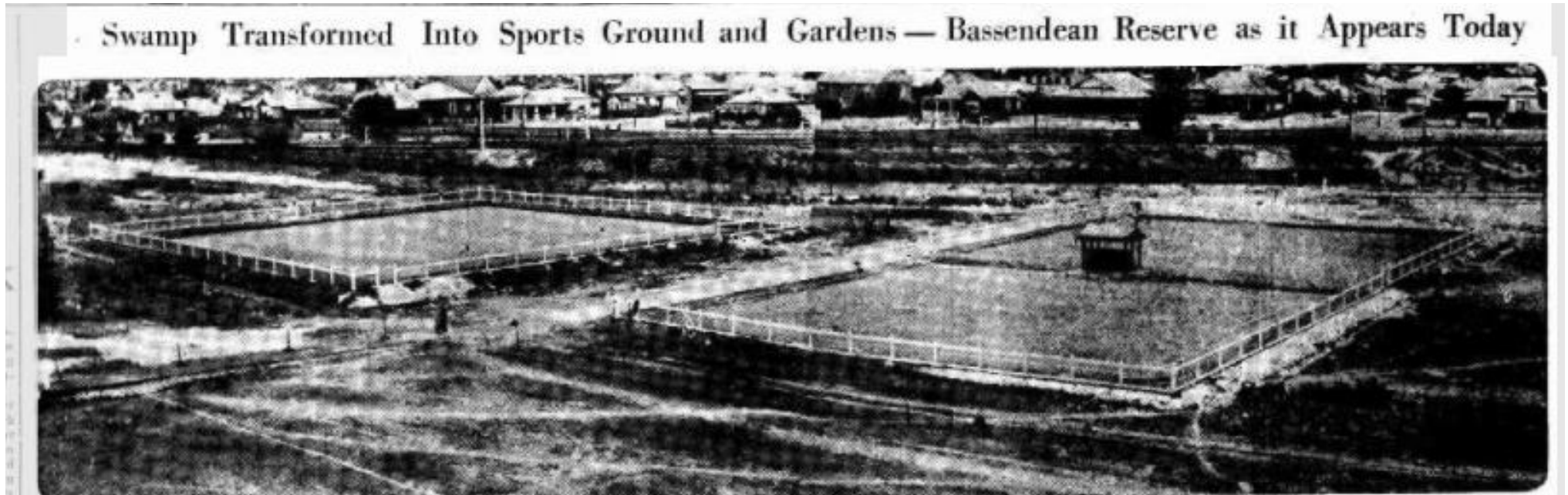
1935

[11 Nov 1935 – Bassendean Improvements](#)



1935

[05 Jan 1935 - Swamp Transformed Into Sports Ground and Gardens — Bassendean Reserve as it Appears Today](#)



1935

[29 Aug 1935 - JUDGE'S BUSY TIME AT DAFFODIL SHOW](#)



1936

[27 Jan 1936 - MINISTER OPENS STEEL WORKS EXTENSIONS](#)



1936

[03 Oct 1936 – New Bassendean Road Board Offices](#)



1937

[02 Sep 1937 - DAFFODILS ON SHOW TODAY](#)



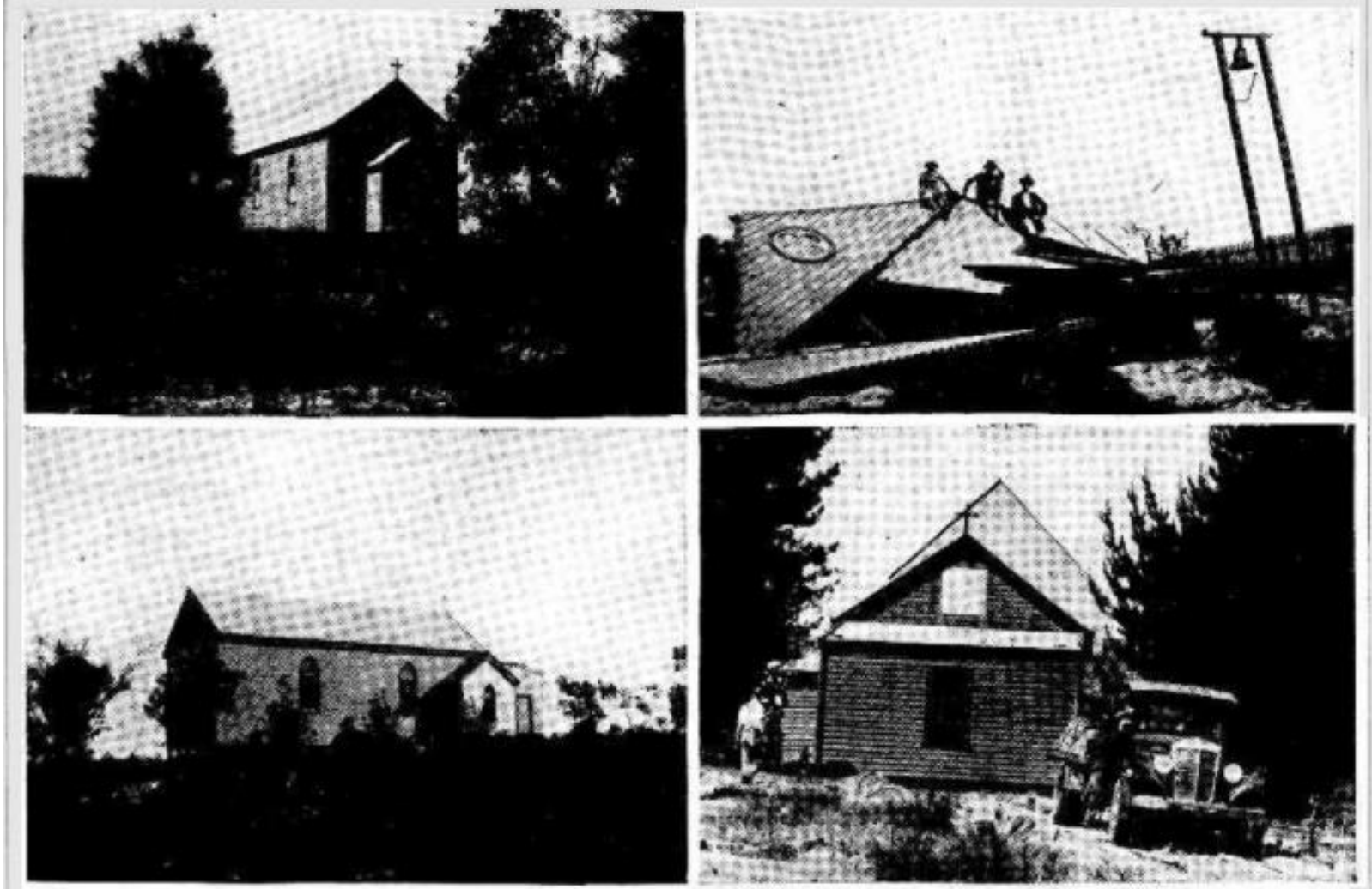
1937

[24 Jun 1937 - CROQUET. -Mrs Cruttenden State Champion](#)



1937

[25 Sep 1937 - CHURCH SHIFTED ON STEEL ROLLERS](#)



1938

[26 May 1938 - Debs. at a Debutantes' Ball.](#)



1938

[12 Dec 1938 – A Fireman's Wedding Mr and Mrs Alexander McDonald](#)



1939

[31 Aug 1935 - NEARLY AS BIG AS HIS "BOSS"](#)



1939

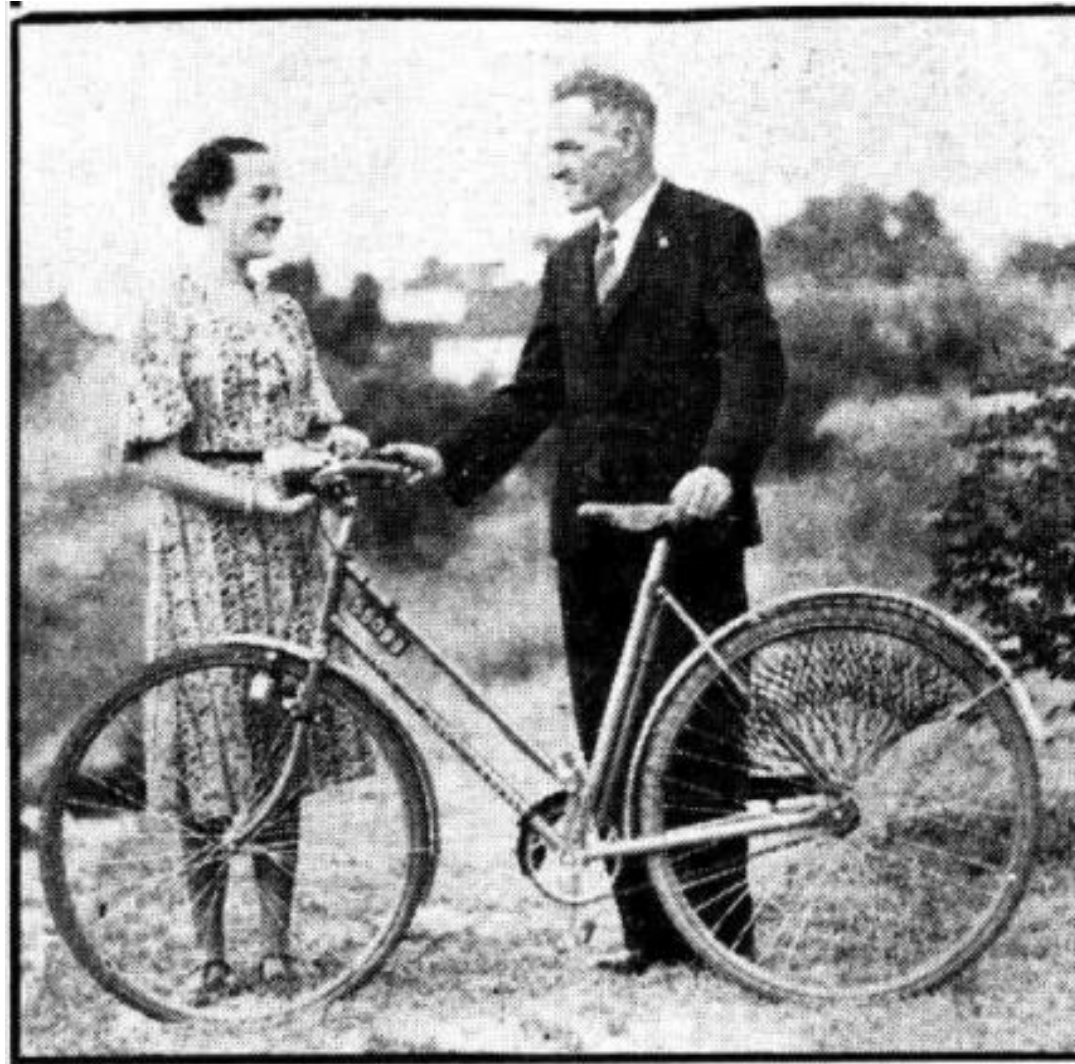
[29 Aug 1939 - SWAN RIVER FLOODS.](#)

SWAN RIVER FLOODS.



1939

[28 Jan 1939 - Heroine Rewarded](#)



1940

[24 Feb 1940 – Parker Street home](#)



1940

[07 Nov 1940 - Bassendean Gala Is On Saturday](#)



1940

[16 May 1940 – Bassendean sewerage](#)



1941

[15 May 1941 - SCOUTING FOR METALS.](#)



1941

[28 Jun 1941 - Scrap Becomes Fighting Steel](#)



1941

[28 Jun 1941 - Scrap Becomes Fighting Steel](#)



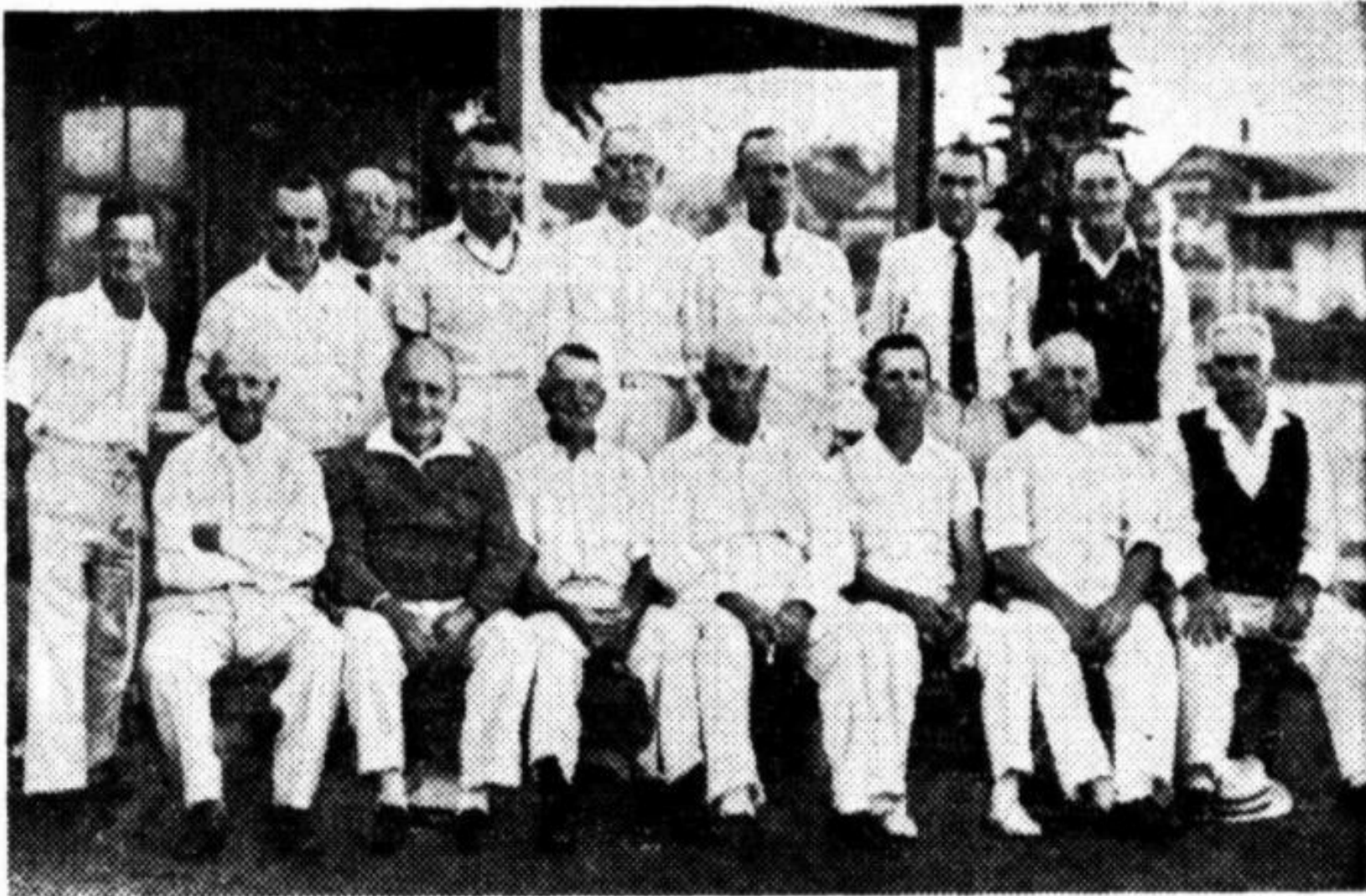
1942

[22 Oct 1942 – Young Sports Temperance League Bassendean Premiers](#)



1942

[23 Apr 1942 - WON THE PENNANT.](#)



1944

[05 Dec 1944 - SCOUTS AT FIRST-AID](#)



1944

[p11 - 20 Jul 1944 – Football fundraiser](#)



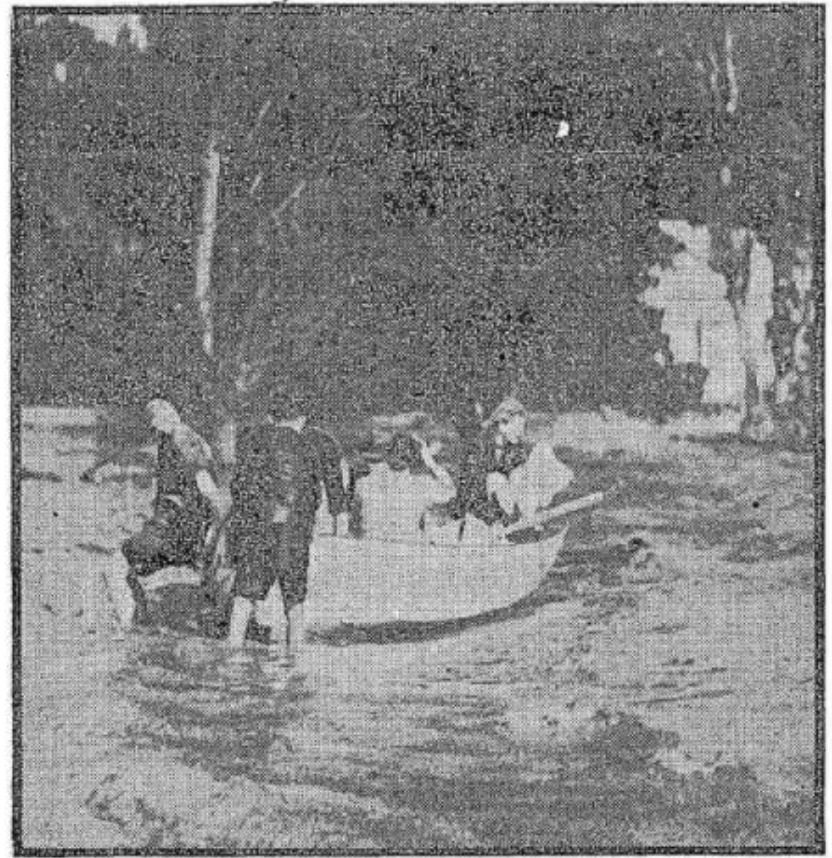
1944

[28 Aug 1944 - WOMEN'S FOOTBALL MATCH.](#)



1945

[22 Jun 1945 - CAMERAMEN SEE FAMILY, FOWLS BOAT MAROONED BY RISING FLOODS](#)



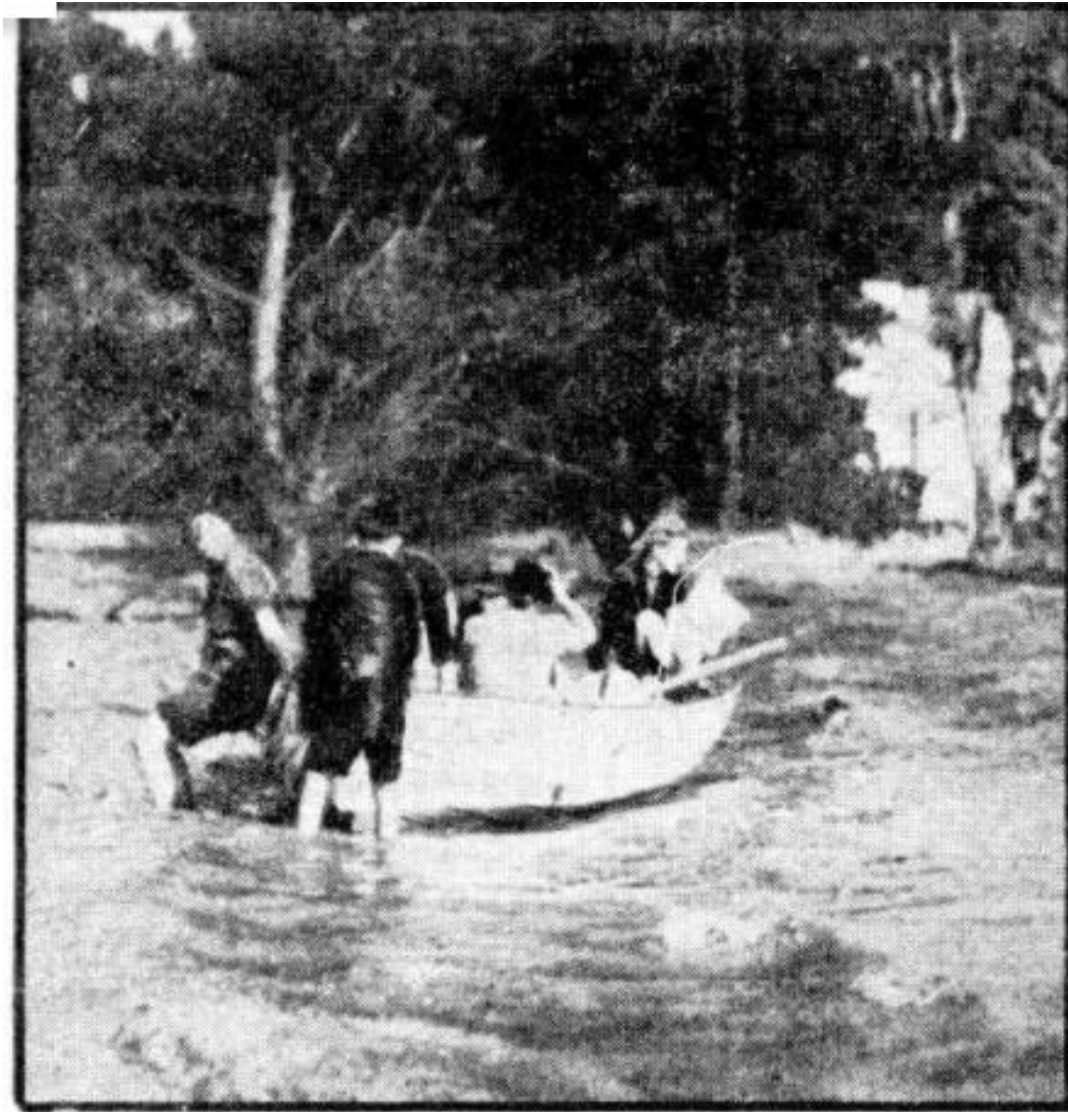
1945

[21 Jun 1945 – Floods at Bassendean](#)



1945

[22 Jun 1945 - CAMERAMEN SEE FAMILY, FOWLS BOAT MAROONED BY RISING FLOODS](#)



1945

[01 Feb 1945 - Bassendean Swimming Picnic.](#)



1945

[29 Jan 1945 - SUCCESSFUL COMPETITORS.](#)



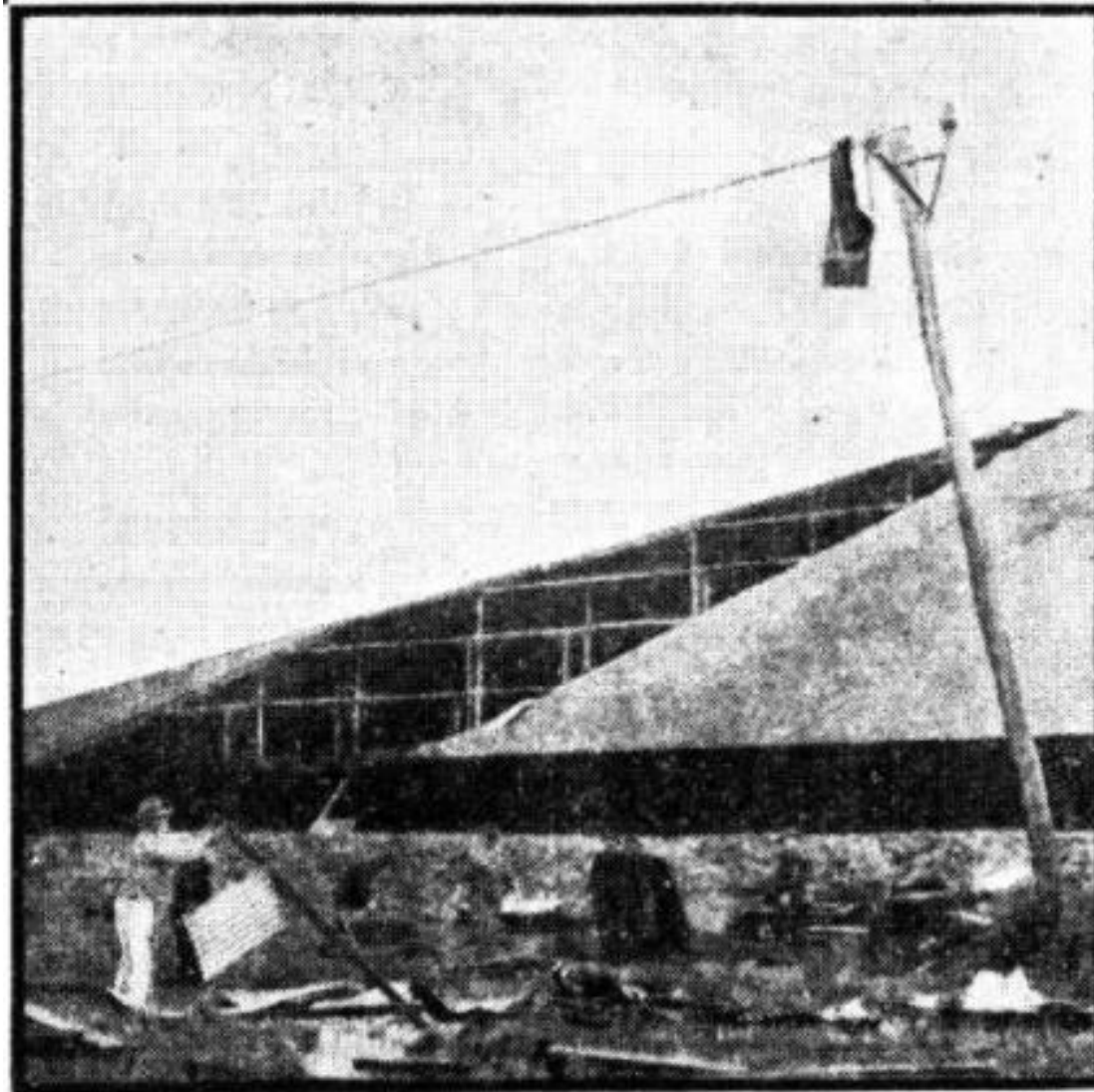
1945

[15 Sep 1945 - STORM AT BASSENDEAN.](#)



1945

[14 Sep 1945 - IRON HANGS ON WIRES](#)



1946

[13 Mar 1946 - HOUSE BUILDING.](#)



1946

12 Dec 1946 - RIVER CARNIVAL



1946

[16 Jul 1946 - COMMUNICATION BY WATER.](#)



1946

25 Jul 1946 - MILKING TIME IN FLOOD TIME.



1946

13 Jul 1946 - ROWS BOAT ALONG SUBURBAN STREET



1946

[16 Jul 1946 - FERRY SERVICE](#)



1946

[25 Oct 1946 - WATER FOR THE ROSES.](#)



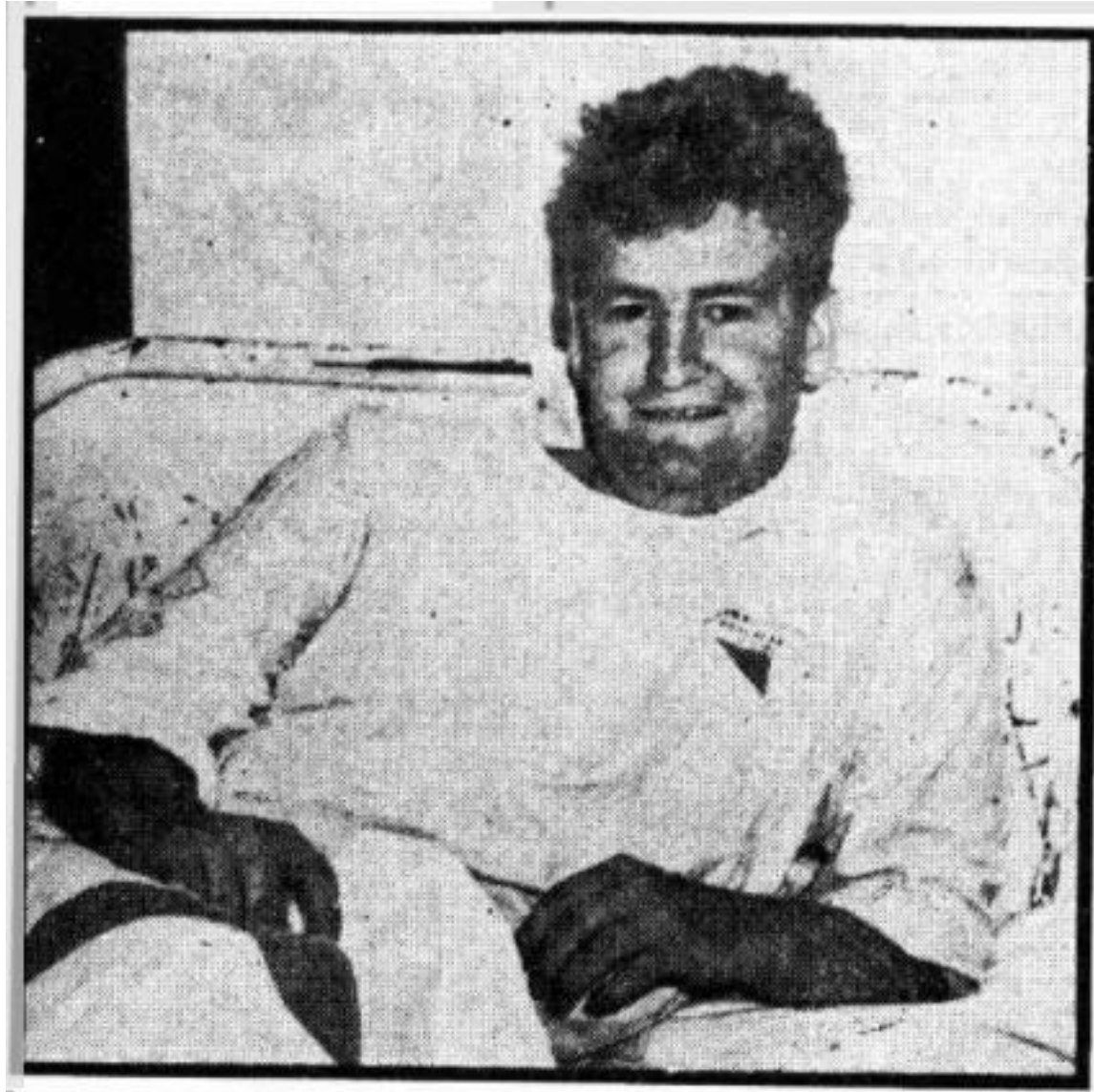
1946

[06 Aug 1946 - WIFE HELPS HIM TO BUILD HOME](#)



1946

[29 Oct 1946 - RESCUED](#)



1946

[30 May 1946 – Success Hill](#)



1947

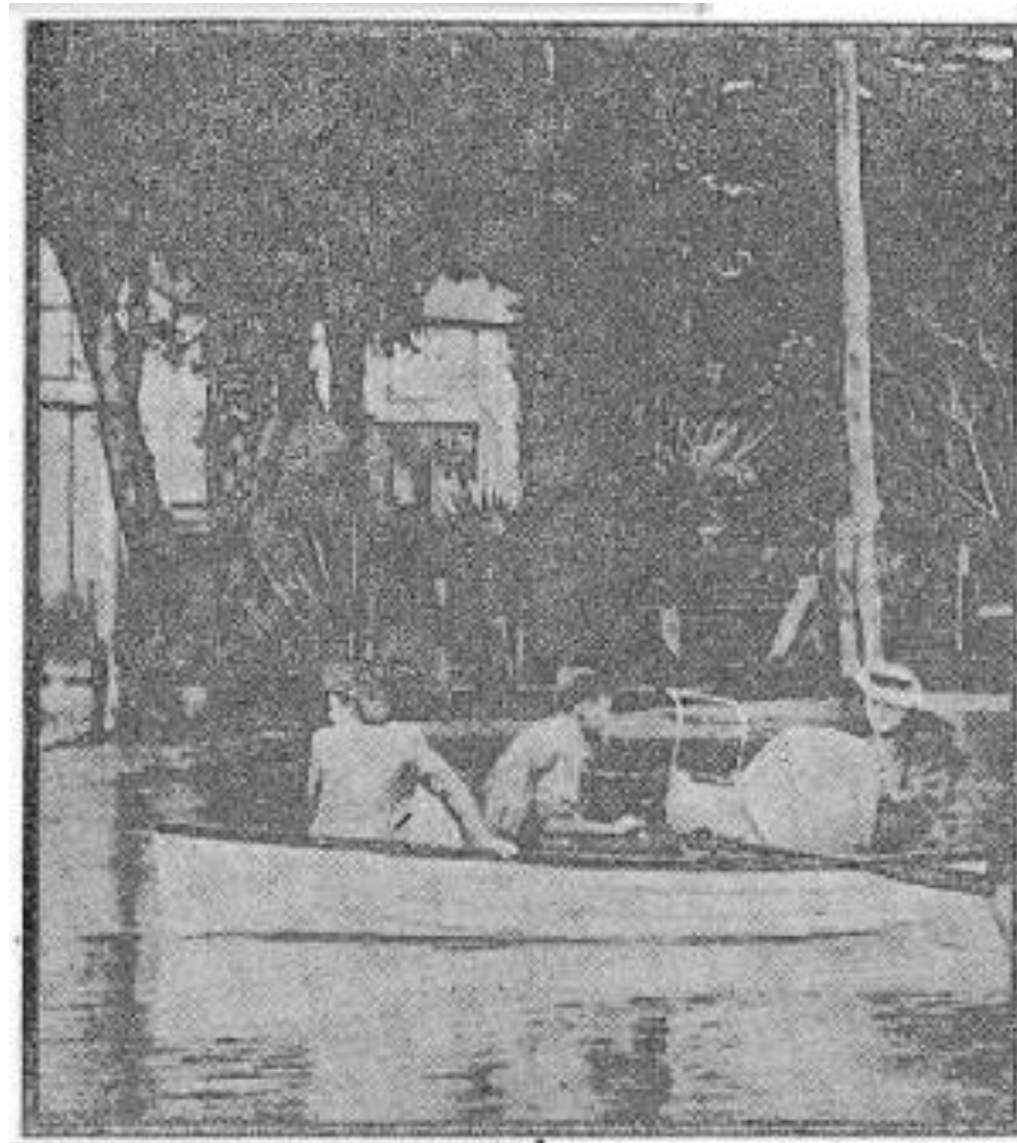
[14 Jan 1947 - BUSY BEE AT BASSENDEAN'S BEACH.](#)

BUSY BEE AT BASSENDEAN'S BEACH.



1947

[30 Jul 1946 - Rows In Street](#)



1947

[09 Apr 1947 - CHAMPION VOLUNTEER FIREMEN.](#)

CHAMPION VOLUNTEER FIREMEN.



1948

[29 Jan 1948 - SCOOPED THE FIRE POOL](#)

SCOOPED THE FIRE POOL

Barnstaple's volunteer firemen scooped the pool at the inter-district fire brigade competitions held at Barnstaple on January 28. Represented by two teams among the seven districts, they filled first and second places in the final scores. Northam secured third place.



Barnstaple No. 1 Team.



Barnstaple No. 2 Team.



Northam.



Scooping the gang.

THE WESTERN MAIL, January 29, 1948, Barnstaple, page 2.

1948

[15 Jul 1948 - MILK STREAM](#)



1948

[15 Jul 1948 - Triumphant ninety-seven Mrs Addenbrooke](#)



1948

[23 Apr 1948 - Bassendean](#) – Historic Home



1949

[29 Jun 1949 – Arbor Day Bassendean with Governor Sir James Mitchell](#)



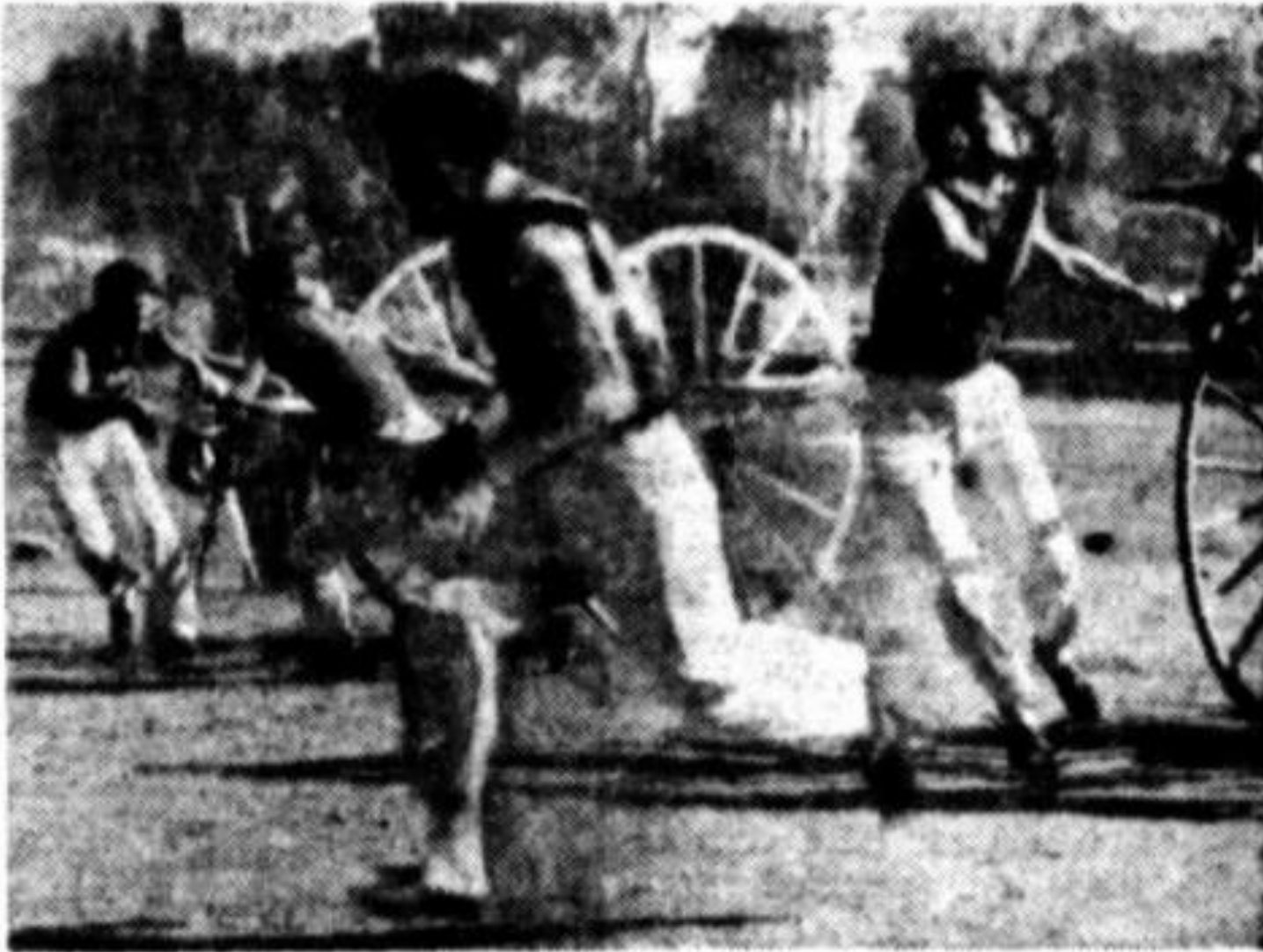
1949

[14 Nov 1949 -Free Tennis Tuition](#)



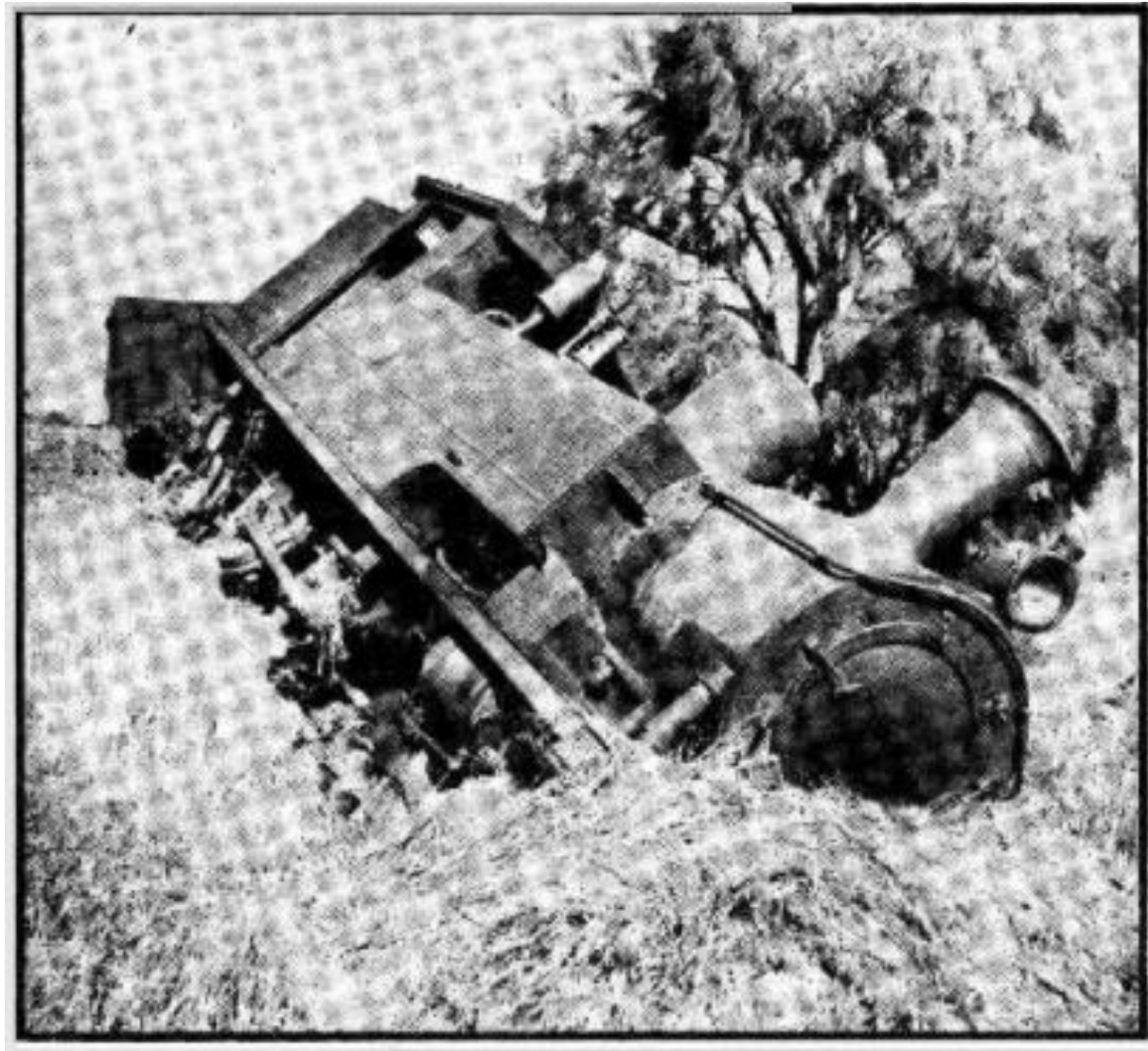
1949

[31 Jan 1949 – Where's the Fire](#)



1949

[30 Sep 1949 - Slip On The Grass](#)



1950

[18 Mar 1950 – Daylesford House](#)



1950

[21 Dec 1950 - Morning Light](#)



1950

[11 Mar 1950 -Swan River Carnival](#)



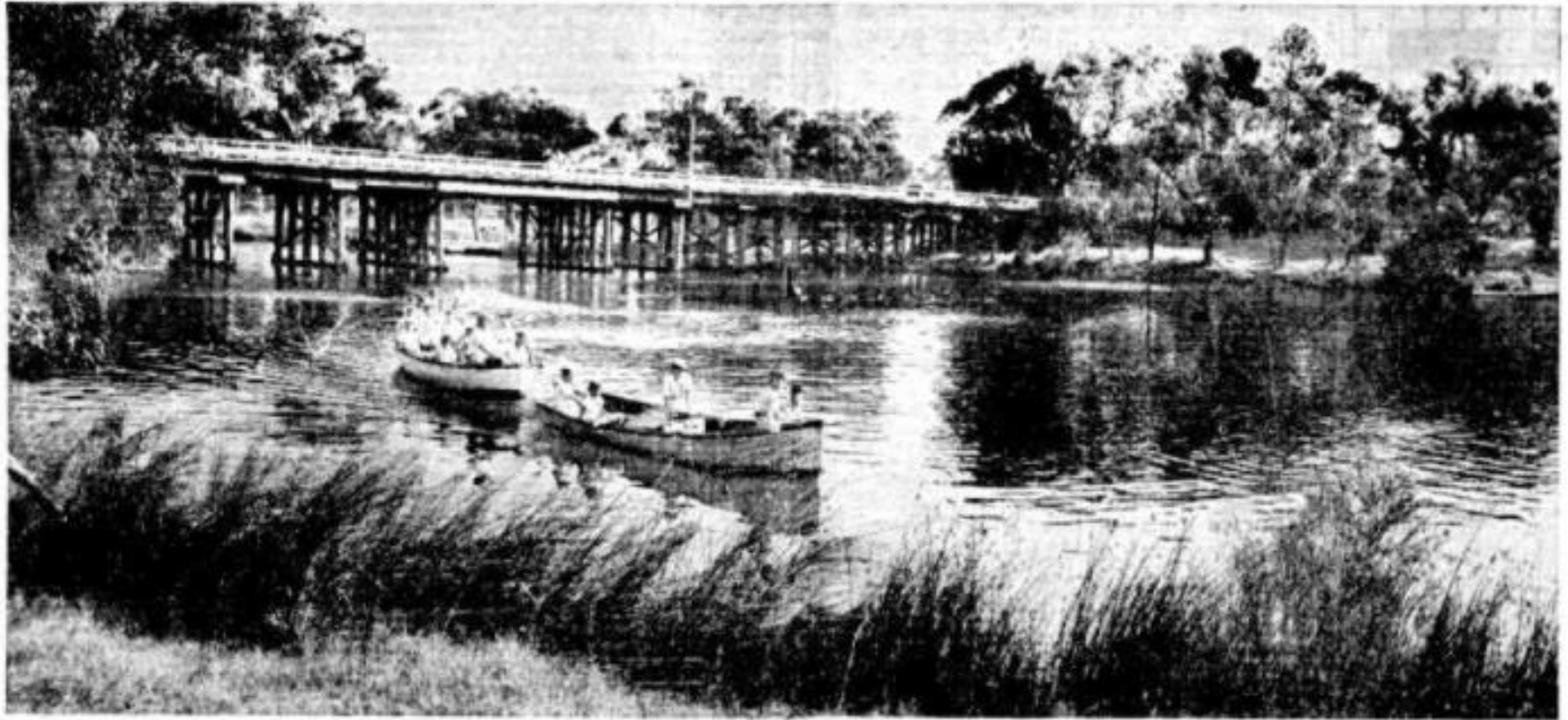
1950

[27 Apr 1950 - Anzac Day In The Suburbs](#)



1950

[04 Mar 1950 – The Swan River](#)



1950

[25 Feb 1950 - FOR THE FIRE BRIGADE CHAMPIONSHIPS](#)



1950

[01 Aug 1950 - LANDMARK DATING BACK TO 1876 TO BE REMOVED](#)



1950

[04 May 1950 - Johnson Memorial Ball](#)



1950

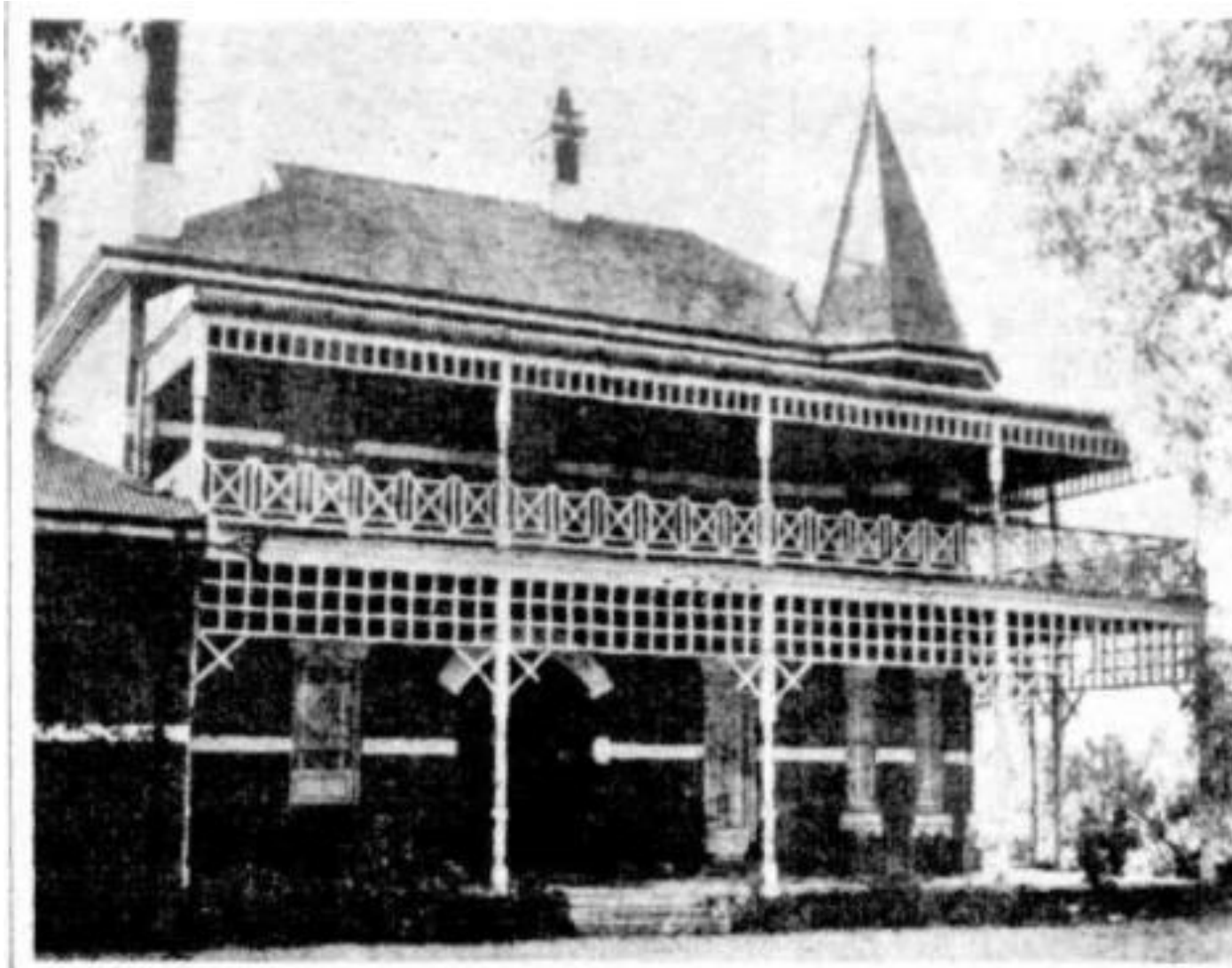
[14 Sep 1950 - METROPOLITAN JUNIOR FOOTBALL FINAL](#)



Bassendean team.

1950

[25 Mar 1950 - PROPOSED HOTEL ON HISTORIC SITE](#)



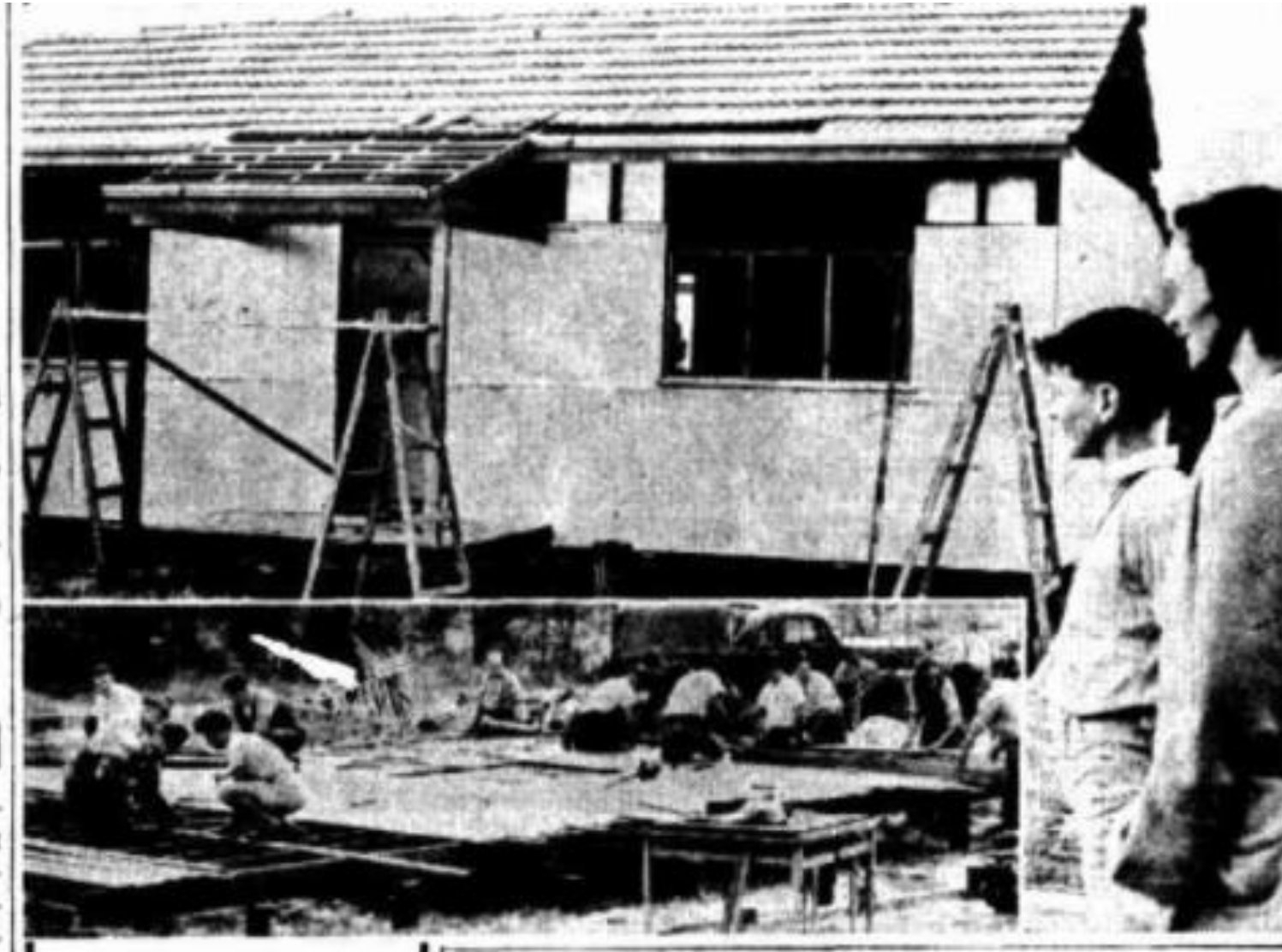
1951

[12 Jul 1951 - Mrs. Addenbrooke, of Bassendean, was born on July 12, 1851 A Zest For Life— At 100](#)



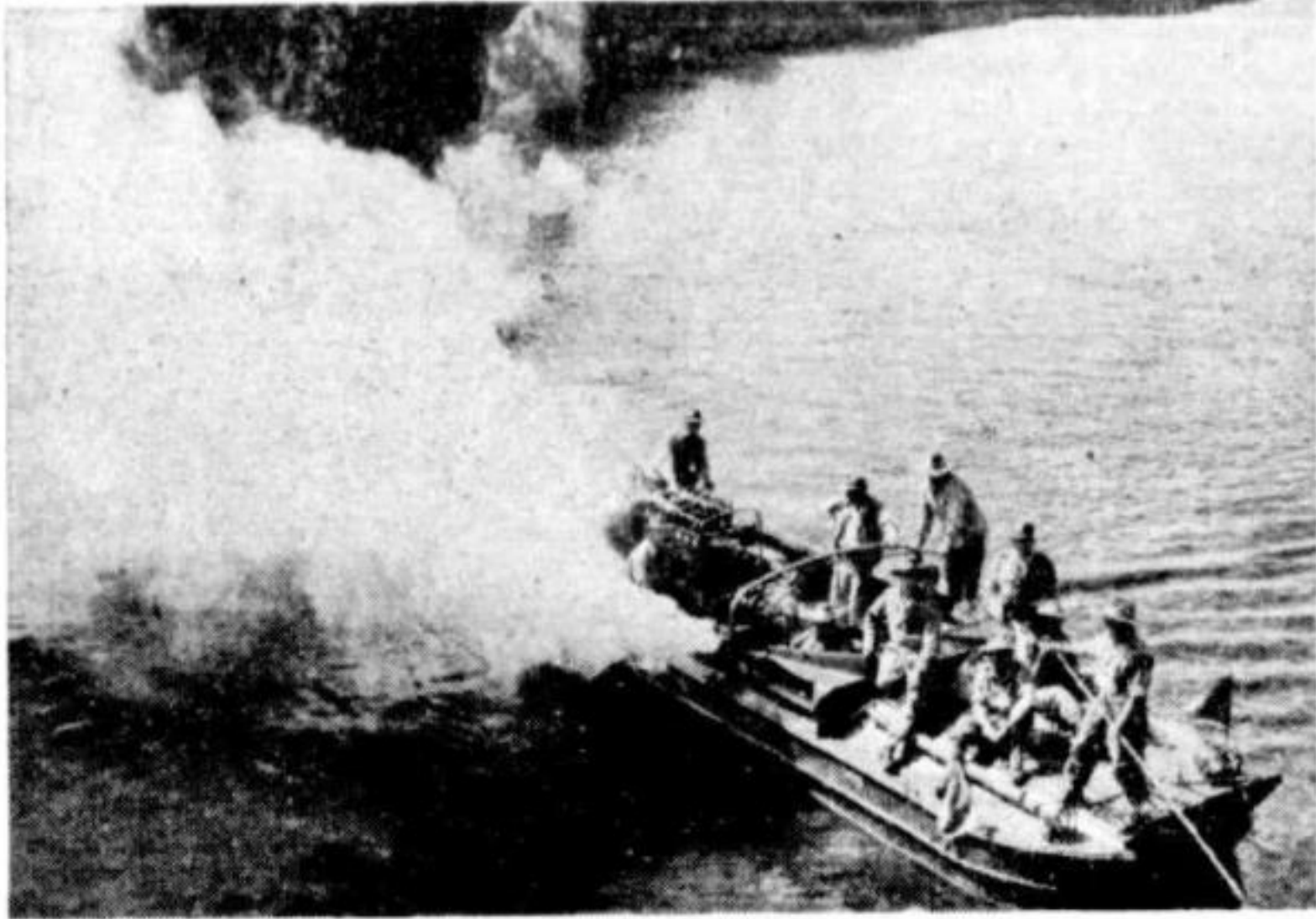
1951

[12 Nov 1951 - HELP FOR A WIDOW—ALL IN A DAY'S WORK](#)



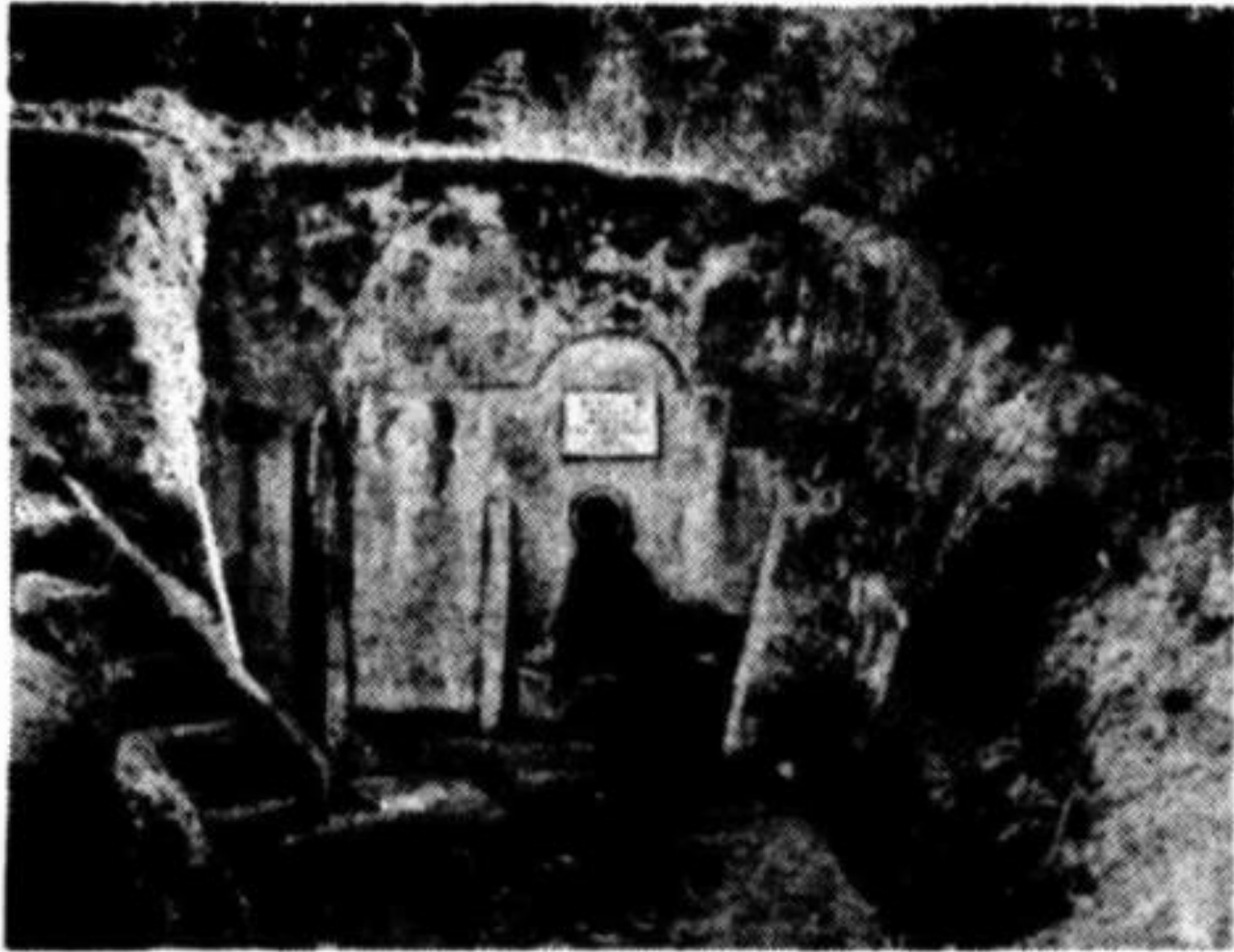
1951

[04 Apr 1951 - SPRAYING OF MOSQUITO-BREEDING GROUNDS](#)



1951

[17 Mar 1951 - Eight Days Were Taken For Stirling's Survey Of The Swan River](#)



1951

[11 Dec 1951 - TEN-TON GEAR BLANK IN TRANSIT](#)



1952

[13 Aug 1952 - YOUNG FARMERS INSPECT THE UNIT THAT GIVES A TRACTOR POWER](#)



What gives a tractor its great power to do the work of many horses? The answer to this question is pondered by three junior farmers now in the city attending a tractor school at Bassendean. They are, from left, W. Thomson, of Tammin, R. Cooke, of Northam, and I. Packham, of Tammin. Members of the school, totalling 34, are camped at the Claremont Showground and travel by bus to the school.

1952

[09 Apr 1952 - HOUSE MAKES WAY FOR A RAILWAY](#)



1952

[20 May 1952 - HUGE MALTESE PUMPKIN](#)



1952

[19 Feb 1952 - OLD-MODEL CAR IN FATAL LEVEL-CROSSING SMASH WITH TRAIN AT BASSENDEAN](#)



1953

[28 Aug 1953 - OUTSTANDING DISPLAY AT STATE DAFFODIL SHOW](#)



1953

[08 Oct 1953 - ARMOURER AT WORK](#)



1953

[13 Mar 1953 - Swimmers' Ceremony](#)



1954

[10 Mar 1954 - FAIRYLAND ATMOSPHERE CREATED IN GARDEN](#)



1954

[23 May 1954 - HIGHLIGHTS OF GAMES AT BASSENDEAN AND FREMANTLE](#)

