

House-Bound Service (Books on wheels)

A delivery service is available for people unable to visit the Library.

Application forms are at the Library and can be printed from the Bassendean Memorial Library website (Our Services)

Seniors

Application forms and newspapers at the Library:

- Senior's Card
- Have-a-go newspaper
- The West Australian Senior newspaper

Bus and Train Timetables

Located in foyer display carousels.

Newspapers

The Library has a number of free, special interest newspapers as well as *The Australian*, *The West Australian*, the *Sunday Times* and the weekend edition of *Financial Review*.

Enlarger For Visually Impaired

Comprises a small moveable platform, a magnifier and a TV screen. Print is significantly enlarged. Available during opening hours.

Displays and Community Notice Boards

Community groups are welcome to use the Library's facilities to promote items of interest or advertise community events.

There is exhibition wall space and two lockable display cases available for local artists and groups to exhibit art, craft and collections. Contact 9279 2966 for more details.

Recycling Service

Used batteries, unwanted spectacles, mobile phones, light globes and empty print cartridges can be deposited in the containers in the Library during opening hours.

Used Books Sale

A permanent display of discarded books and other items can be purchased at bargain prices.

Environment-friendly library bags are for sale at the Library counter for \$1.10.



Reference Services and Databases

Need help finding information on your subject? The library staff can assist you by checking the library's collection, the collections of other libraries and electronic databases.

Services Technology Centre

Internet

Public computers are available. Their use is free, but black and white printouts cost 20c per page. There is no booking system and these terminals are to be used on a first-come first-served basis.

WiFi

Free WiFi access using your WiFi enabled device (Smart phone, tablet, laptop). This service allows you to connect to the internet for basic browsing for 120 minutes.

Word Processing

Computers with Word, Publisher, Excel, Power Point and USB access are available for public use.

Photocopying

Black and white and colour.

B&W: A4 - 20c A3 - 40c

Colour: A4- \$1.00 A3 - \$2.00

Overheads - \$2.20

You can scan to an email address and to your USB at the photocopier.

You can print from your USB (JPEG or TIFF format). A guillotine is available for public use.

Laminating

Business card size - \$1.10 A4 - \$1.65 A3 - \$3.30

Laminating pouches are supplied at the Library.

Binding

Spiral cover card and plastic cover sheet \$4.40.

Faxing

Perth Metro. First page \$3.85.

Additional pages each \$1.10.

Other WA. \$5.50. Ad. pages \$1.10.

Interstate \$6.60. Ad. pages \$2.20.

Overseas \$8.80. Ad. pages \$2.20.

Receiving \$2.20. Ad. pages \$0.55.

A **Justice of the Peace** is available at the Library
Wednesdays 10.00am-11.30am



Bassendean Memorial Library

46 Old Perth Road, Bassendean
Western Australia 6054

PO Box 87, Bassendean WA 6934

Phone: (08)9279 2966

Fax: (08)9279 1869

www.bassendean.wa.gov.au/library

email: baslib@bassendean.wa.gov.au

Opening Hours

Mon 9am - 8pm

Tue 9am - 8pm

Wed 9am - 6pm

Thu 9am - 6pm

Fri 9am - 6pm

Sat 9am - 1pm

**Closed Sundays
and Public Holidays**

You can download a loyalty card app to
scan your library barcode to your mobile.



Information for Borrowers

You must present a Bassendean Library membership card to borrow items from the Library as we have a strict "no card no loans" policy.

Membership is available to all residents of Western Australia at no charge and regardless of age. You will need to provide ID that shows your current address. If you are under 18 you will need to be accompanied by a parent or guardian when you apply to become a member.

You can download a loyalty card app online to scan your library barcode to your mobile.

What Can I Borrow?

You can borrow a combination of any **20** items on each card for **3** weeks. This includes:

- 10 books/magazines/talking books/jigsaws
- 10 DVDs
- 10 music CDs/CD-Roms
- eBooks, eMagazines, eAudios
- 1 Board game per card for 2 weeks

Items can be returned during opening hours or through the after hours return chute.

Renewing Items

All loans are for three weeks only. Items may be renewed in person, by telephone, email or online, as long as they have not been requested by another patron.

Borrowing Rules and Conditions

- Library items must not be removed from the building unless they are registered as a loan.
- If you misplace your current membership card, you will still be considered responsible for any items borrowed on the card until its loss is reported to the library.
- There is a replacement fee of \$2.20 for lost library cards.
- Each member is responsible for ensuring that his/her borrowed items are returned in good order and by the due date.

Damaged items

Members may be required to pay the replacement costs of library items returned in a damaged condition.

Lost items

Members will be required to pay the cost of items lost or not returned. A non-refundable administration fee of \$5.50 will be charged for overdue items.

The Collection

- Regular, large print books and paperbacks
- Audio books
- DVDs, Music CDs
- Graphic novels and comics
- Jigsaws and board games
- Magazines and newspapers
- Australia-wide telephone directories
- Local Government information (Council agendas, minutes, reports and budgets)
- A range of materials in languages other than English
- Local Studies collection
- Reference collection

Events and Activities

Crafty Corner

Library Craft Group Meets each Friday
9.00am - 12.00am. No booking required.

LEGO League

An hour of LEGO building for children 6 to 12 years of age 3:30pm - 4:30pm Library Meeting Room 1.
Held on the last Monday of each month. Each session will open for bookings on the 1st day of the month.

Follow the Library website, newsletter and Facebook for updates on special events held in the Library.

Local Studies Collection

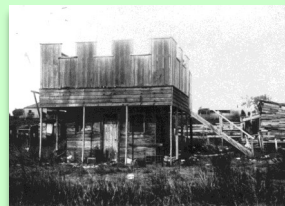
A rich resource on the historical and current development, society and culture of the Town of Bassendean.

Guided Walk

Learn about the history of Old Perth Road with a volunteer guide.

First Wednesday of each month in 2018. 9.45am for a 10.00am start.

For further information contact the Local Studies Librarian 9279 2966. baslib@bassendean.wa.gov.au



Online Services

With your **My Library Account**, you can:

- View and renew your loans
- Check your reservations to be collected
- View and reserve items online

To find out more, visit the Bassendean Library website www.bassendean.wa.gov.au/library for **What you can do online**, and links to **eBooks**, **eMagazines** and **eAudio**.

Inter-Library Loans

Items that cannot be found in the Bassendean Memorial Library catalogue can be requested at the library or via e-mail.

SMS service

The Library will notify you via an SMS when your reservation is ready to be collected. Just ask for the SMS service when you're next at the Library, or phone 9279 2966 to register your mobile phone number.

Storytime and Rhymetime

Storytime sessions are held Thursday and Friday mornings from 10.30am - 11.30am during school term. These are informal gatherings with stories, songs and rhymes, and a simple craft activity. The sessions are aimed at two to four year olds.

Rhymetime session is designed for babies up to 18 months old and is held on Wednesday morning at 11.00am during school term.



Are you new to the digital world? Would you like to learn to learn how to use your new smart phone or tablet/iPad? Our trainers are available to help you navigate the new digital world.

Enquiries, bookings and training sessions available at the Bassendean Library: 9279 2966 or email: baslib@bassendean.wa.gov.au